

# \$589,900 - 3402 3 Township Road 392, Rural Lacombe County

---

MLS® #A2100533

**\$589,900**

4 Bedroom, 2.00 Bathroom, 1,448 sqft  
Residential on 3.83 Acres

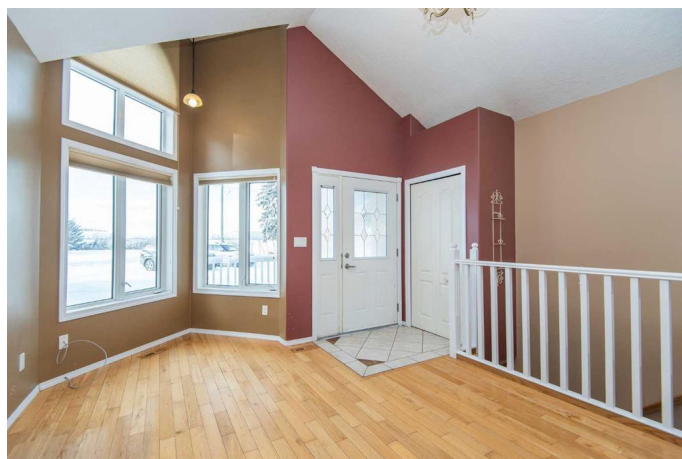
NONE, Rural Lacombe County, Alberta

2006 home on 3.8 acres with ag zoning about 3 miles outside the small community of Eckville. The home features ICF block foundation to keep your utility costs at bay and also has a pellet stove in the main floor family room. The main floor consists of 2 bedrooms, full bath, open concept living/dining/kitchen, family room and handy main floor laundry. The fully finished walk out basement has 2 more bedrooms, full bath, another family room space, an entry space with a large sink handy for bringing in veggies from the garden. The office space would make a lovely media room and has underfloor heat throughout this level. Outside there is a huge barn, corrals with stock waterers. The second home although has been updated over the years can be used only as an accessory building.

Built in 2006

## Essential Information

MLS® #	A2100533
Price	\$589,900
Bedrooms	4
Bathrooms	2.00
Full Baths	2
Square Footage	1,448
Acres	3.83
Year Built	2006



Type	Residential
Sub-Type	Detached
Style	Acreage with Residence, Bi-Level
Status	Active

### Community Information

Address	3402 3 Township Road 392
Subdivision	NONE
City	Rural Lacombe County
County	Lacombe County
Province	Alberta
Postal Code	T0M 0X0

### Amenities

Parking Spaces	2
Parking	Parking Pad

### Interior

Interior Features	Ceiling Fan(s), Crown Molding, High Ceilings, Jetted Tub, Kitchen Island, No Smoking Home, Storage, Vaulted Ceiling(s)
Appliances	Dishwasher, Dryer, Refrigerator, Stove(s), Washer, Window Coverings
Heating	In Floor, Forced Air
Cooling	None
Fireplace	Yes
# of Fireplaces	1
Fireplaces	Family Room, Free Standing, Pellet Stove
Has Basement	Yes
Basement	Finished, Full

### Exterior

Exterior Features	Garden, Private Yard
Lot Description	Backs on to Park/Green Space, Cleared, Front Yard, Gentle Sloping, Greenbelt, Landscaped, Lawn, Many Trees, No Neighbours Behind, Private
Roof	Asphalt Shingle
Construction	Stucco
Foundation	Poured Concrete

### Additional Information

Date Listed	January 10th, 2024
-------------	--------------------

Days on Market     601  
Zoning                 1

**Listing Details**

Listing Office             RE/MAX real estate central alberta

Data is supplied by Pillar 9â„¢ MLSÂ® System. Pillar 9â„¢ is the owner of the copyright in its MLSÂ® System. Data is deemed reliable but is not guaranteed accurate by Pillar 9â„¢. The trademarks MLSÂ®, Multiple Listing ServiceÂ® and the associated logos are owned by The Canadian Real Estate Association (CREA) and identify the quality of services provided by real estate professionals who are members of CREA. Used under license.