

\$200,000 - Near Ponoka, Rural Ponoka County

MLS® #A2163837

\$200,000

0 Bedroom, 0.00 Bathroom,
Land on 10.01 Acres

NONE, Rural Ponoka County, Alberta

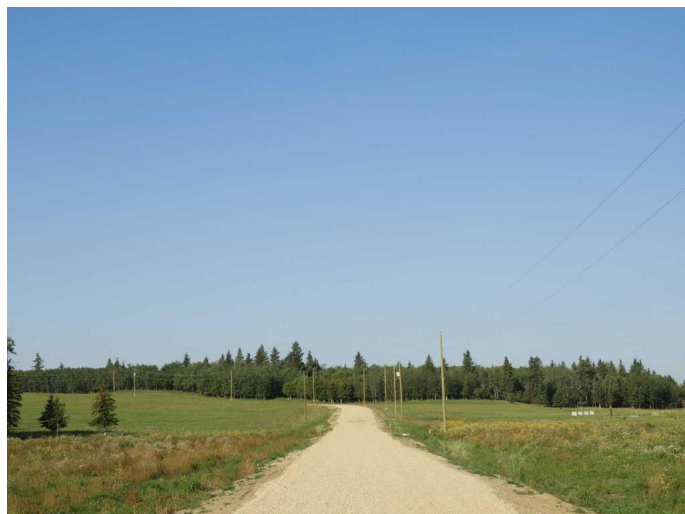
Welcome to Ponoka County's newest acreage subdivision featuring 8.6-10 acre lots zoned Country Residential. This is a premier location to design and build your dream home within a few minutes of the Town of Ponoka! Country Acres is a 9 parcel subdivision with some of the lots being treed and lots that will accommodate walk out basements. A beautiful setting with views of the countryside landscapes situated on high ground, lots of sun exposure and you can enjoy the gorgeous evening sunsets to the west! Close proximity to the Wolf Creek Golf Resort, QE2 and Highway 2A which is great for access to the highways. It is pavement right up to the Range Road 26-2 entering into Country Acres.

These lots are ready for construction - start making your plans and get ready to enjoy country living within a few minutes to Town! GST is applicable on purchase price.

Essential Information

MLS® #	A2163837
Price	\$200,000
Bathrooms	0.00
Acres	10.01
Type	Land
Sub-Type	Residential Land
Status	Active

Community Information



Address	Near Ponoka
Subdivision	NONE
City	Rural Ponoka County
County	Ponoka County
Province	Alberta
Postal Code	T0C 2J0

Amenities

Utilities	Electricity at Lot Line
-----------	-------------------------

Additional Information

Date Listed	September 7th, 2024
Days on Market	300
Zoning	CR1

Listing Details

Listing Office	RE/MAX real estate central alberta
----------------	------------------------------------

Data is supplied by Pillar 9â„¢ MLS® System. Pillar 9â„¢ is the owner of the copyright in its MLS® System. Data is deemed reliable but is not guaranteed accurate by Pillar 9â„¢. The trademarks MLS®, Multiple Listing Service® and the associated logos are owned by The Canadian Real Estate Association (CREA) and identify the quality of services provided by real estate professionals who are members of CREA. Used under license.