

\$10,900,000 - . 573 Highway, Special Areas No. 2

MLS® #A2165743

\$10,900,000

0 Bedroom, 0.00 Bathroom,
Land on 7128.88 Acres

NONE, Special Areas No. 2, Alberta

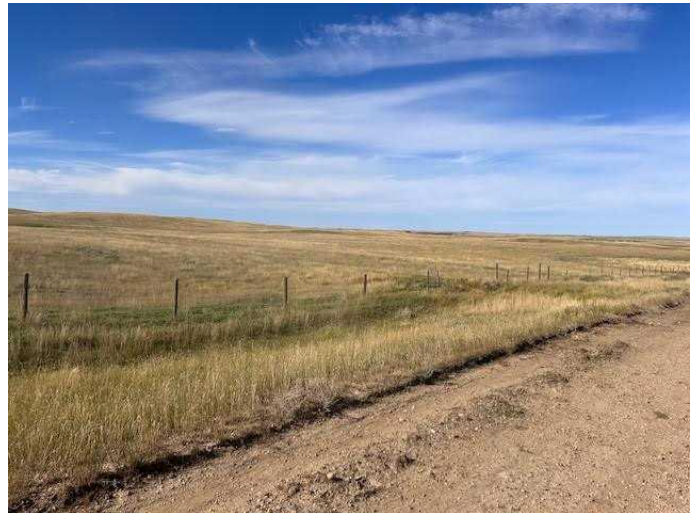
Over 7100 acres of ranchland with a mix of deeded and grazing lease. All in one block with good road access from highways 573 and 849. \$103,000 in surface leases and dugouts throughout the property. Willow creek runs through the northern portion which has been used for many film shoots over the years. No structures on the property but there is some old homesteads if you chose to build. Many fantastic vistas overlooking the Red Deer river valley and Badlands. This land continually has supported between 600 and 1000 animal units. Call your agent to set up a guided showing.

Essential Information

MLS® #	A2165743
Price	\$10,900,000
Bathrooms	0.00
Acres	7,128.88
Type	Land
Sub-Type	Commercial Land
Status	Active

Community Information

Address	. 573 Highway
Subdivision	NONE
City	Special Areas No. 2
County	Special Area 2
Province	Alberta



Postal Code T0J 0Y0

Exterior

Lot Description Pasture

Additional Information

Date Listed October 2nd, 2024

Days on Market 254

Zoning AG

Listing Details

Listing Office Harvest Real Estate

Data is supplied by Pillar 9â„ø MLSÂ® System. Pillar 9â„ø is the owner of the copyright in its MLSÂ® System. Data is deemed reliable but is not guaranteed accurate by Pillar 9â„ø. The trademarks MLSÂ®, Multiple Listing ServiceÂ® and the associated logos are owned by The Canadian Real Estate Association (CREA) and identify the quality of services provided by real estate professionals who are members of CREA. Used under license.