

\$259,999 - 2 Montrose Street, Rural Lacombe County

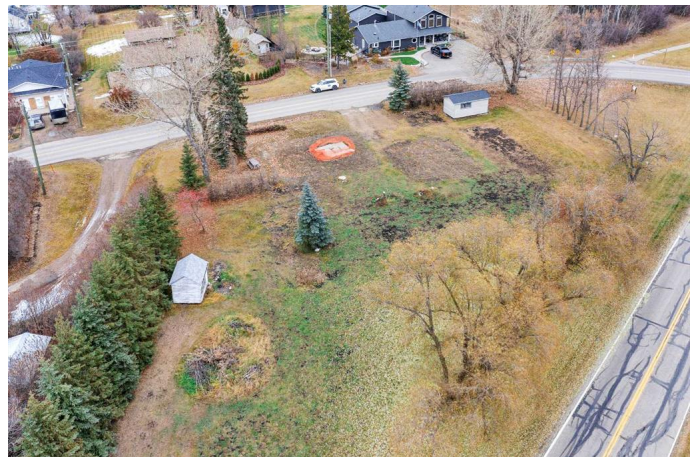
MLS® #A2178928

\$259,999

0 Bedroom, 0.00 Bathroom,
Land on 0.81 Acres

Rosedale Valley, Rural Lacombe County,
Alberta

Visit REALTOR® website for additional information. Situated in the desirable Rosedale Valley, this 0.81-acre parcel of vacant residential land offers a prime opportunity to build your dream home in a serene, convenient setting. Located on the edge of Lacombe, this property combines the best of both worlds—peaceful rural living with convenient access to town amenities. Much of the preparatory work has been done with the removal of the old home. The lot is already equipped with essential services, including gas & power. A well and septic system are also in place. With its beautiful surroundings & easy access to both Lacombe & the nearby countryside, this is a rare chance to create your ideal home in an exceptional location.



Essential Information

MLS® #	A2178928
Price	\$259,999
Bathrooms	0.00
Acres	0.81
Type	Land
Sub-Type	Residential Land
Status	Active

Community Information

Address	2 Montrose Street
---------	-------------------

Subdivision	Rosedale Valley
City	Rural Lacombe County
County	Lacombe County
Province	Alberta
Postal Code	T4L 1X8

Additional Information

Date Listed	November 15th, 2024
Days on Market	228
Zoning	Hamlet

Listing Details

Listing Office	PG Direct Realty Ltd.
----------------	-----------------------

Data is supplied by Pillar 9â„¢ MLS® System. Pillar 9â„¢ is the owner of the copyright in its MLS® System. Data is deemed reliable but is not guaranteed accurate by Pillar 9â„¢. The trademarks MLS®, Multiple Listing Service® and the associated logos are owned by The Canadian Real Estate Association (CREA) and identify the quality of services provided by real estate professionals who are members of CREA. Used under license.