

# \$335,000 - 157 Princeton Crescent W, Lethbridge

MLS® #A2198282

**\$335,000**

4 Bedroom, 2.00 Bathroom, 864 sqft

Residential on 0.14 Acres

Varsity Village, Lethbridge, Alberta

4 Bedroom 2 bathrooms over sized single detached garage, newer siding on garage new hot water tank , newer stainless appliances. great location close to schools, churches and all the amenities you need within walking distance or driving distance. This is a 4 level split great for a family home or a revenue property.

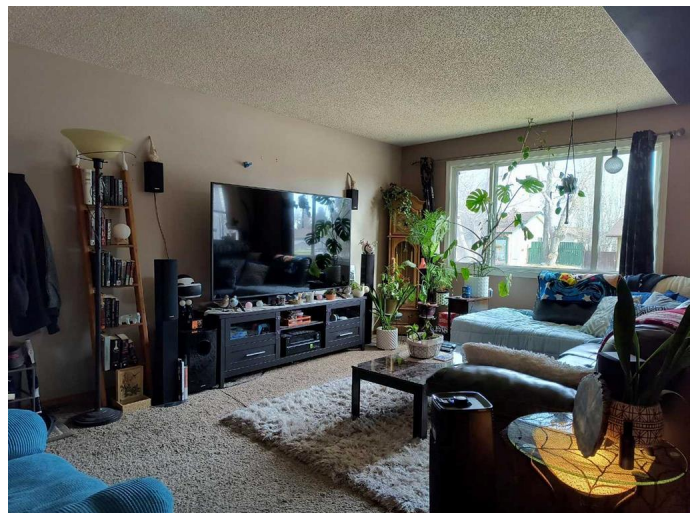
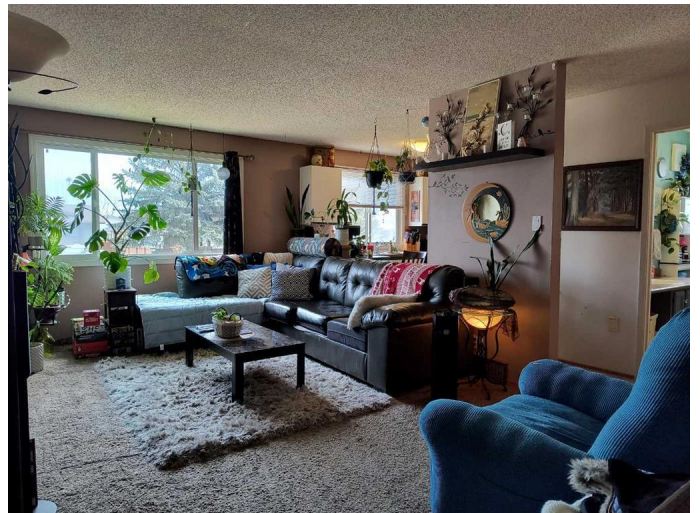
Built in 1980

## Essential Information

MLS® #	A2198282
Price	\$335,000
Bedrooms	4
Bathrooms	2.00
Full Baths	2
Square Footage	864
Acres	0.14
Year Built	1980
Type	Residential
Sub-Type	Detached
Style	4 Level Split
Status	Active

## Community Information

Address	157 Princeton Crescent W
Subdivision	Varsity Village
City	Lethbridge
County	Lethbridge



Province Alberta  
Postal Code T1K4S5

### Amenities

Parking Spaces 3  
Parking Off Street, Parking Pad, Single Garage Detached  
# of Garages 1

### Interior

Interior Features Vinyl Windows, Laminate Counters  
Appliances Dishwasher, Refrigerator, Stove(s), Washer/Dryer  
Heating Forced Air, Natural Gas  
Cooling None  
Has Basement Yes  
Basement Finished, Full

### Exterior

Exterior Features Garden  
Lot Description Back Yard  
Roof Asphalt  
Construction Wood Frame, Metal Siding  
Foundation Poured Concrete

### Additional Information

Date Listed March 3rd, 2025  
Days on Market 10  
Zoning R-LB

### Listing Details

Listing Office Lethbridge Real Estate.com

Data is supplied by Pillar 9â„¢ MLSÂ® System. Pillar 9â„¢ is the owner of the copyright in its MLSÂ® System. Data is deemed reliable but is not guaranteed accurate by Pillar 9â„¢. The trademarks MLSÂ®, Multiple Listing ServiceÂ® and the associated logos are owned by The Canadian Real Estate Association (CREA) and identify the quality of services provided by real estate professionals who are members of CREA. Used under license.