

# \$439,900 - 408 Keystone Chase W, Lethbridge

MLS® #A2216552

**\$439,900**

4 Bedroom, 3.00 Bathroom, 1,023 sqft  
Residential on 0.08 Acres

Copperwood, Lethbridge, Alberta

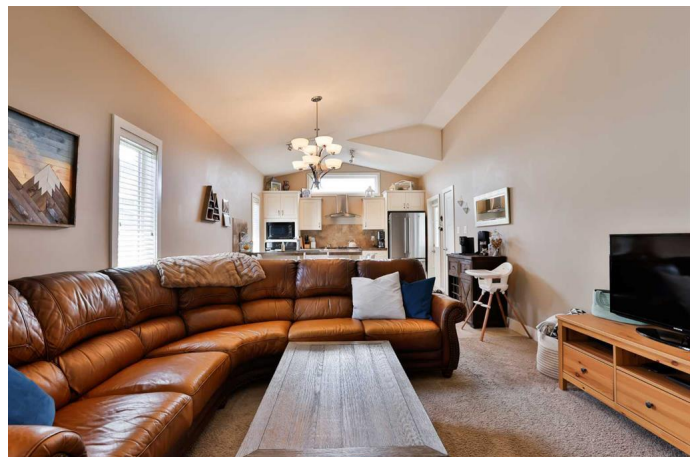
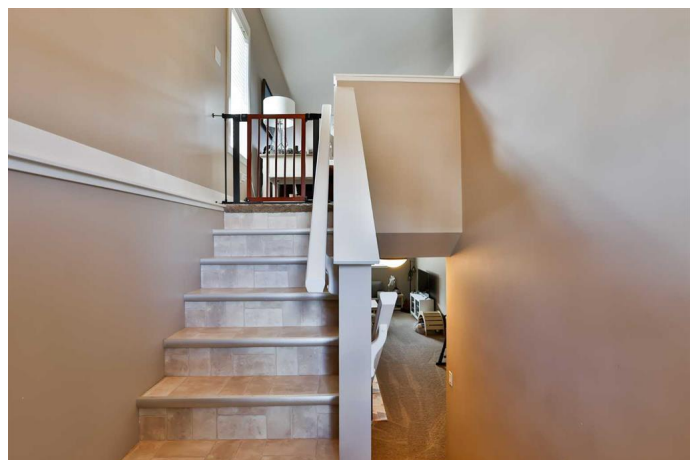
COPPERWOOD, across from the green space !! This eye catching 4 bedroom, 3 bathroom, Bi-Level home sits on a quiet street and features a comfortable and functional layout.

The main floor consists of a Living room, Kitchen, Dining room, 2 Bedrooms and 2 Baths. Check out this kitchen , beautiful white cabinetry , huge island , and upgraded stainless steel appliances including a gas stove and built in oven and microwave. The primary bedroom has it's own full ensuite with walk-in closet. The lower level is fully developed with a spacious Family room, 2 additional Bedrooms, a full Bath and a Laundry room. Outside you will find a low maintenance fenced yard with a double detached garage. Best of all, this home is steps away from all amenities , shopping, dining and the new popular new Rec center with a connecting green space. Come check it out!!!

Built in 2011

## Essential Information

MLS® #	A2216552
Price	\$439,900
Bedrooms	4
Bathrooms	3.00
Full Baths	3
Square Footage	1,023
Acres	0.08



Year Built	2011
Type	Residential
Sub-Type	Detached
Style	Bi-Level
Status	Active

### **Community Information**

Address	408 Keystone Chase W
Subdivision	Copperwood
City	Lethbridge
County	Lethbridge
Province	Alberta
Postal Code	T1J 5C4

### **Amenities**

Parking Spaces	2
Parking	Double Garage Detached
# of Garages	2

### **Interior**

Interior Features	Breakfast Bar, Central Vacuum, Chandelier, High Ceilings, Laminate Counters, Open Floorplan, Vaulted Ceiling(s), Walk-In Closet(s)
Appliances	Built-In Oven, Central Air Conditioner, Dishwasher, Garage Control(s), Microwave, Range Hood, Refrigerator, Window Coverings, Gas Stove
Heating	Forced Air, Natural Gas
Cooling	Central Air
Has Basement	Yes
Basement	Finished, Full

### **Exterior**

Exterior Features	Private Yard
Lot Description	Back Lane, Back Yard, Landscaped, Lawn, Low Maintenance Landscape
Roof	Asphalt Shingle
Construction	Vinyl Siding
Foundation	Poured Concrete

### **Additional Information**

Date Listed	May 1st, 2025
Days on Market	2

Zoning

R-CL

## **Listing Details**

Listing Office

RE/MAX REAL ESTATE - LETHBRIDGE

Data is supplied by Pillar 9â„¸ MLSÂ® System. Pillar 9â„¸ is the owner of the copyright in its MLSÂ® System. Data is deemed reliable but is not guaranteed accurate by Pillar 9â„¸. The trademarks MLSÂ®, Multiple Listing ServiceÂ® and the associated logos are owned by The Canadian Real Estate Association (CREA) and identify the quality of services provided by real estate professionals who are members of CREA. Used under license.