

\$339,900 - 2639 22 Avenue S, Lethbridge

MLS® #A2217659

\$339,900

4 Bedroom, 2.00 Bathroom, 1,040 sqft

Residential on 0.13 Acres

Agnes Davidson, Lethbridge, Alberta

BE FIRST IN LINE! This is a fine address to come home to. Extremely well-located southside bungalow with loads of potential! Just two blocks from Agnes Davidson School, and within short walking distance to playgrounds, coulees, restaurants, shopping and groceries. A total of 4 bedrooms, 2 bathrooms, vaulted open beam living room, single detached garage, mature yard and covered patio for summer relaxing.

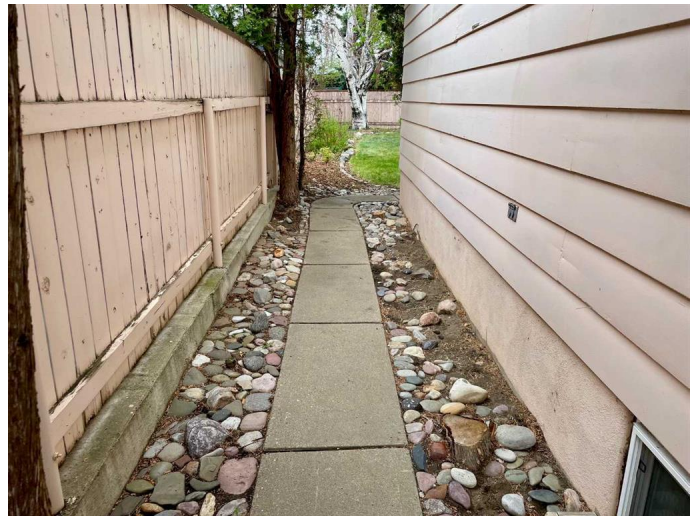
Built in 1962

Essential Information

| | |
|----------------|-------------|
| MLS® # | A2217659 |
| Price | \$339,900 |
| Bedrooms | 4 |
| Bathrooms | 2.00 |
| Full Baths | 2 |
| Square Footage | 1,040 |
| Acres | 0.13 |
| Year Built | 1962 |
| Type | Residential |
| Sub-Type | Detached |
| Style | Bungalow |
| Status | Active |

Community Information

| | |
|-------------|------------------|
| Address | 2639 22 Avenue S |
| Subdivision | Agnes Davidson |



| | |
|-------------|------------|
| City | Lethbridge |
| County | Lethbridge |
| Province | Alberta |
| Postal Code | T1K 1J8 |

Amenities

| | |
|----------------|------------------------|
| Parking Spaces | 3 |
| Parking | Single Garage Detached |
| # of Garages | 1 |

Interior

| | |
|-------------------|---|
| Interior Features | Vaulted Ceiling(s), Beamed Ceilings |
| Appliances | Dryer, Freezer, Gas Stove, Refrigerator, Washer, Window Coverings |
| Heating | Forced Air |
| Cooling | None |
| Has Basement | Yes |
| Basement | Finished, Full |

Exterior

| | |
|-------------------|---|
| Exterior Features | Private Yard |
| Lot Description | Back Lane, Back Yard, Landscaped, Standard Shaped Lot, Wooded |
| Roof | Tar/Gravel |
| Construction | Brick, Wood Siding |
| Foundation | Poured Concrete |

Additional Information

| | |
|----------------|---------------|
| Date Listed | May 5th, 2025 |
| Days on Market | 3 |
| Zoning | R-L |

Listing Details

| | |
|----------------|---------------------------|
| Listing Office | SUTTON GROUP - LETHBRIDGE |
|----------------|---------------------------|

Data is supplied by Pillar 9â„¢ MLS® System. Pillar 9â„¢ is the owner of the copyright in its MLS® System. Data is deemed reliable but is not guaranteed accurate by Pillar 9â„¢. The trademarks MLS®, Multiple Listing Service® and the associated logos are owned by The Canadian Real Estate Association (CREA) and identify the quality of services provided by real estate professionals who are members of CREA. Used under license.