

# \$332,000 - 8914 92 Avenue, Lac La Biche

---

MLS® #A2217912

## \$332,000

2 Bedroom, 1.00 Bathroom, 1,135 sqft

Residential on 0.14 Acres

NONE, Lac La Biche, Alberta

Fantastic starter home, perfect for the small family or rental market. Close to schools, recreation facilities and parks. 2 bedroom 1 bathroom home features quaint kitchen with plenty of cabinet space, beautiful 4 pc bathroom and an attached single garage. The basement is a blank canvas ready for your design; make it exactly what your family needs!

Call today for your personal viewing of this great home!

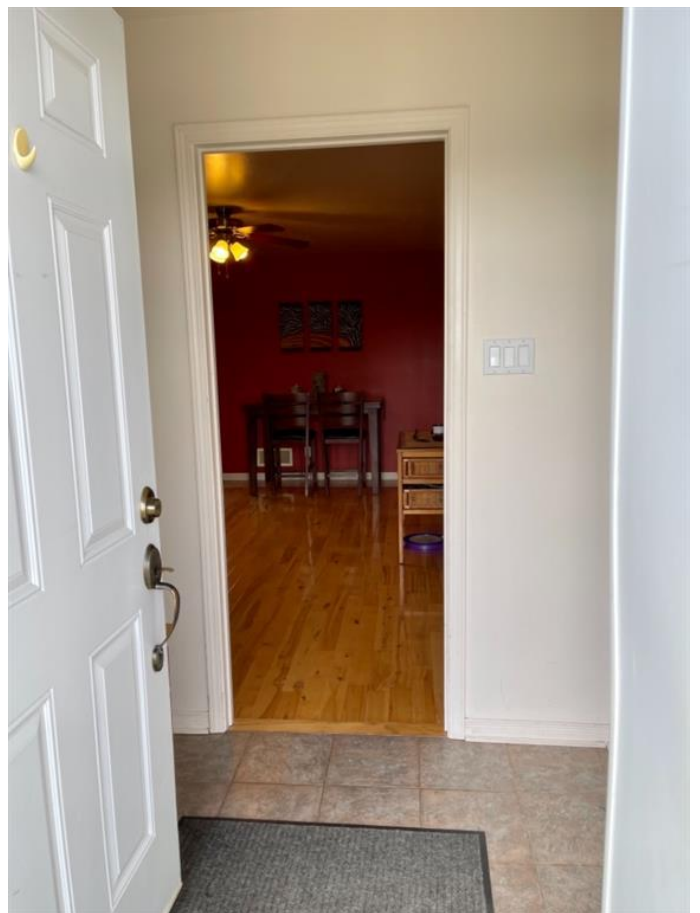
Built in 2007

## Essential Information

MLS® #	A2217912
Price	\$332,000
Bedrooms	2
Bathrooms	1.00
Full Baths	1
Square Footage	1,135
Acres	0.14
Year Built	2007
Type	Residential
Sub-Type	Detached
Style	Bungalow
Status	Active

## Community Information

Address	8914 92 Avenue
Subdivision	NONE



City	Lac La Biche
County	Lac La Biche County
Province	Alberta
Postal Code	T0A 2C0

### Amenities

Parking Spaces	2
Parking	Single Garage Attached
# of Garages	1

### Interior

Interior Features	Ceiling Fan(s), Jetted Tub
Appliances	Dishwasher, Electric Range, Refrigerator, Washer/Dryer
Heating	Forced Air
Cooling	None
Has Basement	Yes
Basement	Full, Unfinished

### Exterior

Exterior Features	Garden
Lot Description	Street Lighting
Roof	Asphalt Shingle
Construction	Concrete, Wood Frame
Foundation	Poured Concrete

### Additional Information

Date Listed	May 5th, 2025
Days on Market	4
Zoning	Residential

### Listing Details

Listing Office	RE/MAX LA BICHE REALTY
----------------	------------------------

Data is supplied by Pillar 9â„¢ MLS® System. Pillar 9â„¢ is the owner of the copyright in its MLS® System. Data is deemed reliable but is not guaranteed accurate by Pillar 9â„¢. The trademarks MLS®, Multiple Listing Service® and the associated logos are owned by The Canadian Real Estate Association (CREA) and identify the quality of services provided by real estate professionals who are members of CREA. Used under license.