

# **\$824,000 - 10628 148 Avenue, Rural Grande Prairie No. 1, County of**

---

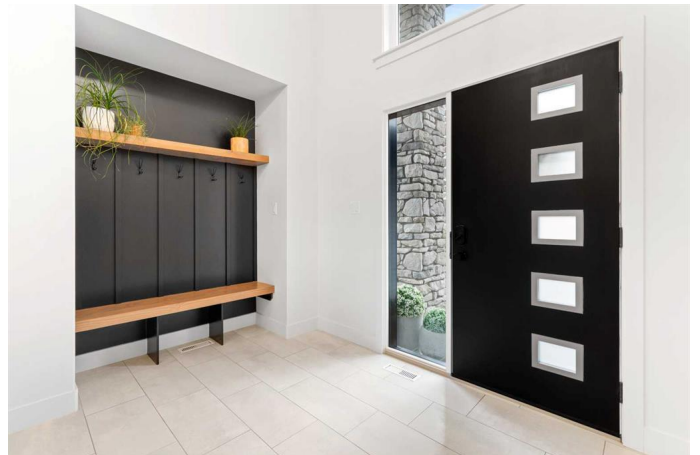
MLS® #A2219146

**\$824,000**

5 Bedroom, 4.00 Bathroom, 1,969 sqft  
Residential on 0.17 Acres

Whispering Ridge, Rural Grande Prairie No. 1,  
County of, Alberta

Welcome to your dream home in Whispering Ridge, one of Grande Prairie County's most sought-after communities! Built in 2021 by Highmark Homes featuring the popular Myron floorplan, this stunning property is perfectly designed for family living and entertaining. Boasting 5 spacious bedrooms and 3.5 bathrooms, this fully developed home seamlessly blends style and practicality. As you approach, the home's striking exterior is complemented by zero-maintenance stone landscaping, ensuring curb appeal with minimal upkeep. Inside, the bright open-concept main living area impresses with gorgeous beamed ceilings, expansive windows, and a chef-inspired kitchen complete with a massive center island, open shelving details, and a generous pantry. The main floor primary suite provides a tranquil retreat, featuring an expansive walk-in closet and luxurious ensuite with a relaxing soaking tub, dual sinks, and a beautifully tiled shower with dual shower heads and seating bench. Upstairs, discover two additional bedrooms and a full bathroom—perfectly private for kids or guests. The thoughtfully designed walkout basement offers two more large bedrooms, a full bathroom, and a spacious family room with direct access to the beautifully landscaped and fully fenced backyard. This outdoor oasis includes a covered deck equipped with a



built-in Napoleon BBQ and Calcana heater, ideal for year-round enjoyment. Additionally, the backyard features 15 mature trees, already planted and thriving. Practical comforts such as air conditioning, heated triple garage, main-floor laundry, and ample walk-in closets in four bedrooms add convenience and comfort to daily life. Beyond your doorstep, Whispering Ridge delivers an exceptional lifestyle: walk your kids to the highly rated community school, enjoy the playground just steps away, or stroll along picturesque walking paths and ponds. Known for community gatherings, friendly neighbours, and future plans for a high school, this area isn't just a place to live—it's a vibrant community where lifelong friendships are made.

Built in 2021

**Essential Information**

MLS® #	A2219146
Price	\$824,000
Bedrooms	5
Bathrooms	4.00
Full Baths	3
Half Baths	1
Square Footage	1,969
Acres	0.17
Year Built	2021
Type	Residential
Sub-Type	Detached
Style	Modified Bi-Level
Status	Active

**Community Information**

Address	10628 148 Avenue
Subdivision	Whispering Ridge
City	Rural Grande Prairie No. 1, County of
County	Grande Prairie No. 1, County of

Province	Alberta
Postal Code	T8X0W2

### Amenities

Parking Spaces	6
Parking	Heated Garage, Triple Garage Detached
# of Garages	3

### Interior

Interior Features	Beamed Ceilings, Built-in Features, Central Vacuum, Closet Organizers, Double Vanity, High Ceilings, Kitchen Island, Open Floorplan, Pantry, Stone Counters, Storage, Tankless Hot Water, Walk-In Closet(s)
Appliances	Central Air Conditioner, Dishwasher, Dryer, Electric Stove, Refrigerator, Washer
Heating	Forced Air
Cooling	Central Air
Fireplace	Yes
# of Fireplaces	1
Fireplaces	Gas
Has Basement	Yes
Basement	Finished, Full, Walk-Out

### Exterior

Exterior Features	Built-in Barbecue
Lot Description	Back Yard, Few Trees, Landscaped, Low Maintenance Landscape
Roof	Asphalt Shingle
Construction	Mixed
Foundation	Poured Concrete

### Additional Information

Date Listed	May 8th, 2025
Days on Market	7
Zoning	RR-2

### Listing Details

Listing Office	eXp Realty
----------------	------------

Data is supplied by Pillar 9â„¢ MLS® System. Pillar 9â„¢ is the owner of the copyright in its MLS® System. Data is deemed reliable but is not guaranteed accurate by Pillar 9â„¢. The trademarks MLS®, Multiple Listing Service® and the associated logos are owned by The Canadian Real Estate Association (CREA) and identify the quality of services provided by real estate professionals who are members of CREA. Used under license.