

\$849,900 - 22 Creek Road, Rural Ponoka County

MLS® #A2220456

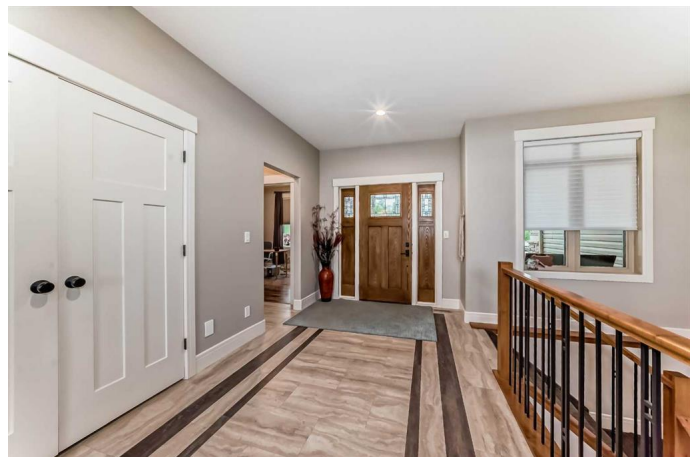
\$849,900

4 Bedroom, 3.00 Bathroom, 1,908 sqft

Residential on 1.81 Acres

Wolf Creek Estates, Rural Ponoka County, Alberta

Discover this exquisite estate home, nestled on nearly 2 acres, showcasing meticulous craftsmanship and striking curb appeal. Built by Gill Custom Homes, this walkout bungalow blends luxury and functionality with high-end finishes. Featuring 2+2 bedrooms, this "Smart Home" integrates Control 4 technology for seamless control of lighting, thermostats, garage doors, and a robust audio system with 8 outdoor and 14 indoor speakers. The airy Great Room impresses with vaulted ceilings, large windows, and a gas fireplace framed in floor-to-ceiling stone. The chef's kitchen is a masterpiece, equipped with a walk-through pantry, premium appliances—including a built-in coffee/espresso machine, oversized fridge/freezer, convection and steam ovens—and a grand granite-topped island. The primary suite offers a spa-inspired ensuite with dual vanities, a steam shower, a soaker tub, and a thoughtfully designed walk-in closet, with direct access to the back deck. The office at the front of the home could also be utilized as a bedroom. A well-placed laundry room near the mudroom and garage offers ample storage. The walkout basement is an entertainer's dream, featuring a rec room, wet bar with fridge, dishwasher, microwave, a wine room, and a theatre room pre-wired for Dolby Atmos. In-floor heating adds comfort throughout the lower level. Outside, enjoy mature trees, Cedar shakes, stone accents, paved RV parking, extensive landscaping, and



a gas line for a barbecue or fire table, with hot tub wiring (hot tub negotiable). A concrete pad serves as a basketball court or additional patio. The private backyard borders a wooded area and creek, offering tranquility. Located just minutes from Highway 2, 10 minutes from Ponoka and Lacombe, 25 minutes from Red Deer, and 45 minutes from Edmonton International Airport, this move-in-ready luxury bungalow is the perfect blend of elegance and convenience. Seize the opportunity to call this extraordinary property home!

Built in 2015

Essential Information

MLS® #	A2220456
Price	\$849,900
Bedrooms	4
Bathrooms	3.00
Full Baths	3
Square Footage	1,908
Acres	1.81
Year Built	2015
Type	Residential
Sub-Type	Detached
Style	Acreage with Residence, Bungalow
Status	Active

Community Information

Address	22 Creek Road
Subdivision	Wolf Creek Estates
City	Rural Ponoka County
County	Ponoka County
Province	Alberta
Postal Code	T4J 1R3

Amenities

Parking	Triple Garage Attached
# of Garages	3

Interior

Interior Features	See Remarks
Appliances	Central Air Conditioner, Dishwasher, Electric Stove, Garage Control(s), Refrigerator, Washer/Dryer, Window Coverings
Heating	Forced Air
Cooling	Central Air
Fireplace	Yes
# of Fireplaces	1
Fireplaces	Gas
Has Basement	Yes
Basement	Finished, Full

Exterior

Exterior Features	Fire Pit, Private Yard
Lot Description	See Remarks
Roof	Asphalt Shingle
Construction	Vinyl Siding
Foundation	Poured Concrete

Additional Information

Date Listed	May 15th, 2025
Days on Market	18
Zoning	Recreational Resort

Listing Details

Listing Office	RE/MAX real estate central alberta
----------------	------------------------------------

Data is supplied by Pillar 9â„¢ MLS® System. Pillar 9â„¢ is the owner of the copyright in its MLS® System. Data is deemed reliable but is not guaranteed accurate by Pillar 9â„¢. The trademarks MLS®, Multiple Listing Service® and the associated logos are owned by The Canadian Real Estate Association (CREA) and identify the quality of services provided by real estate professionals who are members of CREA. Used under license.