

# \$409,900 - 5924 41 Street, Lloydminster

MLS® #A2223281

**\$409,900**

5 Bedroom, 3.00 Bathroom, 1,277 sqft

Residential on 0.19 Acres

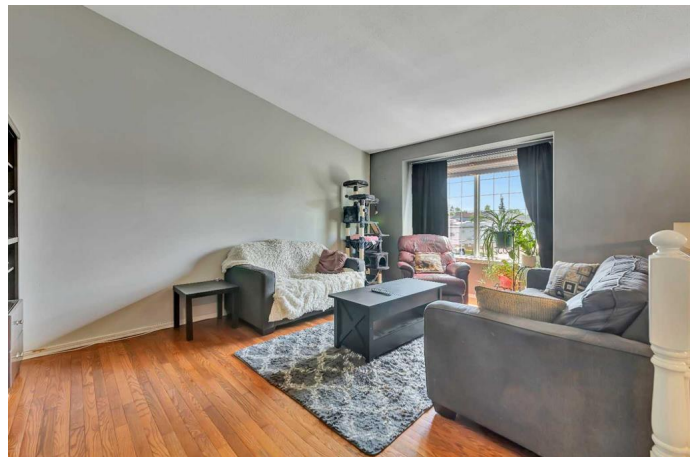
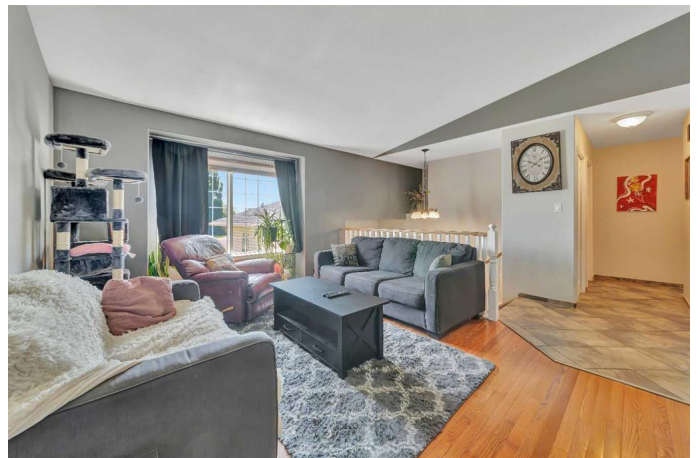
Southridge, Lloydminster, Alberta

Tucked into the family-friendly Southridge neighbourhood of Lloydminster, this fully finished bi-level sits on a large pie-shaped lot backing onto a peaceful berm with direct access to walking paths. Just minutes from parks, schools, and everyday amenities, the location is spot on. Inside, you'll find vaulted ceilings and neutral tones throughout, with a functional layout that includes a kitchen featuring a corner pantry, an island, and plenty of cabinet space. There are five bedrooms, including a primary with a 3-piece ensuite and a generous walk-in closet. The basement family room is cozy and inviting, with a gas fireplace. Outside, the updated deck features composite boards, a privacy fence, and a natural gas BBQ line, making it an ideal space for outdoor living. With central A/C, a double attached garage, and recent updates to the shingles and hot water tank, this home offers solid value and room to personalize. 3D Virtual Tour Available!

Built in 1997

## Essential Information

MLS® #	A2223281
Price	\$409,900
Bedrooms	5
Bathrooms	3.00
Full Baths	3
Square Footage	1,277



Acres	0.19
Year Built	1997
Type	Residential
Sub-Type	Detached
Style	Bi-Level
Status	Active

### **Community Information**

Address	5924 41 Street
Subdivision	Southridge
City	Lloydminster
County	Lloydminster
Province	Alberta
Postal Code	T9V 2S2

### **Amenities**

Parking Spaces	2
Parking	Concrete Driveway, Double Garage Attached, Insulated
# of Garages	2

### **Interior**

Interior Features	Kitchen Island, Pantry, Vaulted Ceiling(s), Walk-In Closet(s)
Appliances	Dishwasher, Dryer, Garage Control(s), Range Hood, Refrigerator, Stove(s), Washer
Heating	Forced Air, Natural Gas
Cooling	Central Air
Has Basement	Yes
Basement	Finished, Full

### **Exterior**

Exterior Features	BBQ gas line
Lot Description	Back Yard, Front Yard, Irregular Lot, Landscaped, Lawn, Treed
Roof	Asphalt Shingle
Construction	Vinyl Siding, Wood Siding
Foundation	Wood

### **Additional Information**

Date Listed	June 2nd, 2025
Days on Market	4

Zoning R1

## Listing Details

Listing Office RE/MAX OF LLOYDMINSTER

Data is supplied by Pillar 9â„¢ MLS® System. Pillar 9â„¢ is the owner of the copyright in its MLS® System. Data is deemed reliable but is not guaranteed accurate by Pillar 9â„¢. The trademarks MLS®, Multiple Listing Service® and the associated logos are owned by The Canadian Real Estate Association (CREA) and identify the quality of services provided by real estate professionals who are members of CREA. Used under license.