

# \$699,515 - 155 Saddlebred Place, Cochrane

MLS® #A2226384

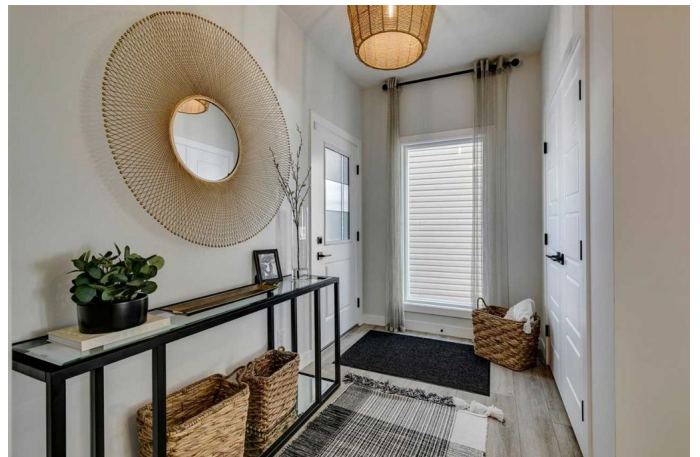
**\$699,515**

3 Bedroom, 3.00 Bathroom, 2,172 sqft

Residential on 0.09 Acres

Heartland, Cochrane, Alberta

Introducing the Ashton — a home that blends modern sophistication with thoughtful design. Built by a trusted builder with over 70 years of experience, this home showcases on-trend, designer-curated interior selections tailored for a home that feels personalized to you. This energy-efficient home is Built Green certified and includes triple-pane windows, a high-efficiency furnace, and a solar chase for a solar-ready setup. With blower door testing that can offer up to may be eligible for up to 25% mortgage insurance savings, plus an electric car charger rough-in, it's designed for sustainable, future-forward living. Featuring a full suite of smart home technology, this home includes a programmable thermostat, ring camera doorbell, smart front door lock, smart and motion-activated switches—all seamlessly controlled via an Amazon Alexa touchscreen hub. The heart of this home is the executive kitchen, featuring sleek built-in stainless steel appliances, a stunning island with a waterfall edge, and a premium Silgranit sink. The main floor shines with 9' ceilings, an I.T. area, and a gas fireplace, while each bedroom offers its own walk-in closet. Unwind in the vaulted bonus room or indulge in the luxurious 5-piece ensuite with a tiled shower and soaker tub. With built in lockers in the mudroom, paint-grade railing with iron spindles, and a side entrance, this home has it all! Plus, your move will be stress-free with a concierge service provided by Sterling Homes Calgary that handles all your moving



essentialsâ€”even providing boxes! Photos are representative.

Built in 2024

Essential Information

MLS® #	A2226384
Price	\$699,515
Bedrooms	3
Bathrooms	3.00
Full Baths	2
Half Baths	1
Square Footage	2,172
Acres	0.09
Year Built	2024
Type	Residential
Sub-Type	Detached
Style	2 Storey
Status	Active

Community Information

Address	155 Saddlebred Place
Subdivision	Heartland
City	Cochrane
County	Rocky View County
Province	Alberta
Postal Code	T4C3E6

Amenities

Amenities	None
Parking Spaces	4
Parking	Double Garage Attached
# of Garages	2

Interior

Interior Features	Double Vanity, Kitchen Island, Open Floorplan, Pantry, Separate Entrance, Smart Home, Soaking Tub, Tankless Hot Water, Vaulted Ceiling(s), Walk-In Closet(s), Solar Tube(s)
Appliances	Built-In Oven, Dishwasher, Gas Cooktop, Microwave, Range Hood,

	Refrigerator, Tankless Water Heater
Heating	Forced Air, Natural Gas
Cooling	None
Fireplace	Yes
# of Fireplaces	1
Fireplaces	Decorative, Gas
Has Basement	Yes
Basement	Full, Unfinished

## Exterior

Exterior Features	None
Lot Description	Back Yard
Roof	Asphalt Shingle
Construction	Stone, Vinyl Siding, Wood Frame
Foundation	Poured Concrete

## Additional Information

Date Listed	June 3rd, 2025
Days on Market	5
Zoning	TBD
HOA Fees	325
HOA Fees Freq.	ANN

## Listing Details

Listing Office	Bode Platform Inc.
----------------	--------------------

Data is supplied by Pillar 9â„¢ MLSÂ® System. Pillar 9â„¢ is the owner of the copyright in its MLSÂ® System. Data is deemed reliable but is not guaranteed accurate by Pillar 9â„¢. The trademarks MLSÂ®, Multiple Listing ServiceÂ® and the associated logos are owned by The Canadian Real Estate Association (CREA) and identify the quality of services provided by real estate professionals who are members of CREA. Used under license.