

\$629,900 - 13 Pinnacle Lake Drive, Grande Prairie

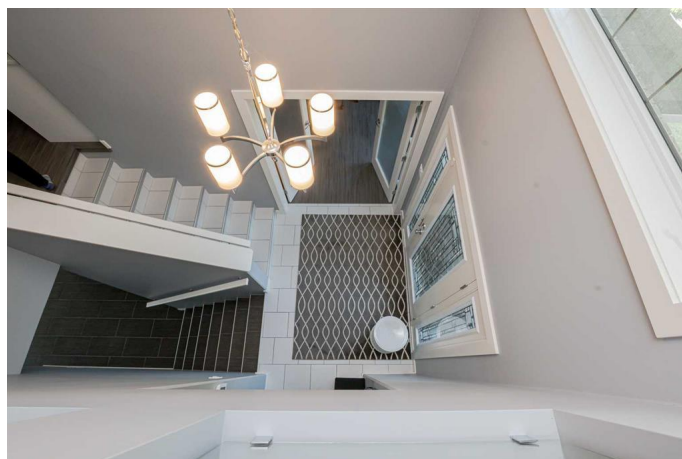
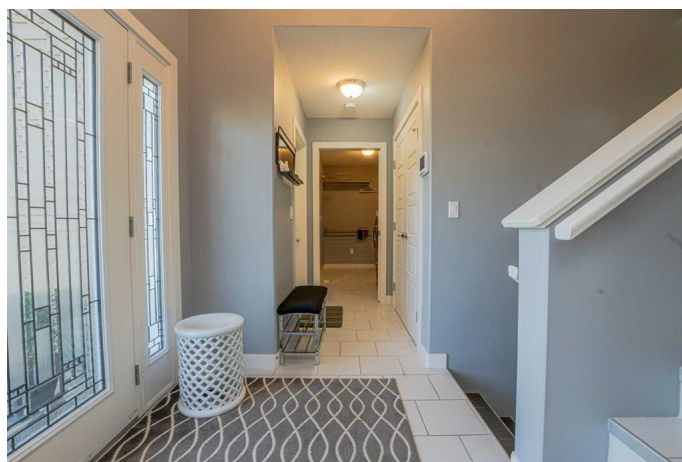
MLS® #A2227221

\$629,900

3 Bedroom, 4.00 Bathroom, 1,841 sqft
Residential on 0.14 Acres

Pinnacle Ridge., Grande Prairie, Alberta

This immaculately kept modified bi-level offers a great mix of comfort, hospitality, and practicality, perfect for today's homeowner. Built with care and attention to detail, this home boasts a spacious, open-concept layout that suits both everyday living and entertaining. The vaulted home entry opens to a bright home office space or the well-appointed laundry room fitted with ample storage & cabinetry. The main-level kitchen is bright and highly functional, featuring white cabinets, a dark cabinet island, quartz countertops, a gas stovetop, a solid shelf pantry, and ample prep space. It is open to the dining area and living space, filled with natural light. The private balcony offers a great relaxing spot to enjoy the views or savor your morning coffee. A main-level primary bedroom offers a 4-piece ensuite and a large walk-in closet. Upstairs above the garage are two ample bedrooms and another full bathroom—ideal for kids or guests. The bright walk-out basement is professionally finished and features a large family room with a second gas fireplace and ample space for a games area or a pool table. There's also a flex room (8'10 x 9'10) currently set up as a gym, which could easily be turned into a fourth bedroom, plus a 4-piece bathroom and loads of storage, including a window seat with under-the-bench storage. Outside, the meticulously maintained yard is beautifully landscaped and includes a lower sun deck as well as an exposed aggregate pad patio. The home backs onto



Pinnacle Lake, offering peaceful views and the privacy of open space, as there are no neighbors behind it. Close to schools, walking trails, shopping amenities, restaurants, medical offices, and the Eastlink Centre. This home has the perfect balance of location, luxury, functionality, and style. This one is worth a look!

Built in 2010

Essential Information

MLS® #	A2227221
Price	\$629,900
Bedrooms	3
Bathrooms	4.00
Full Baths	3
Half Baths	1
Square Footage	1,841
Acres	0.14
Year Built	2010
Type	Residential
Sub-Type	Detached
Style	Modified Bi-Level
Status	Active

Community Information

Address	13 Pinnacle Lake Drive
Subdivision	Pinnacle Ridge.
City	Grande Prairie
County	Grande Prairie
Province	Alberta
Postal Code	T8W 2X6

Amenities

Parking Spaces	4
Parking	Double Garage Attached
# of Garages	2

Interior

Interior Features	High Ceilings, Kitchen Island, No Animal Home, No Smoking Home, Open Floorplan, Pantry, Walk-In Closet(s)
Appliances	Dishwasher, Gas Stove, Microwave, Refrigerator, Washer/Dryer, Window Coverings
Heating	Forced Air, Natural Gas
Cooling	None
Fireplace	Yes
# of Fireplaces	2
Fireplaces	Basement, Family Room, Gas
Has Basement	Yes
Basement	Finished, Full, Walk-Out

Exterior

Exterior Features	Balcony
Lot Description	Back Yard, Backs on to Park/Green Space, Front Yard, Landscaped, Lawn, No Neighbours Behind, Rectangular Lot, Street Lighting, Views, Few Trees
Roof	Asphalt Shingle
Construction	Aluminum Siding, Brick, Vinyl Siding
Foundation	Poured Concrete

Additional Information

Date Listed	June 3rd, 2025
Days on Market	5
Zoning	RS

Listing Details

Listing Office	RE/MAX Grande Prairie
----------------	-----------------------

Data is supplied by Pillar 9â„¢ MLS® System. Pillar 9â„¢ is the owner of the copyright in its MLS® System. Data is deemed reliable but is not guaranteed accurate by Pillar 9â„¢. The trademarks MLS®, Multiple Listing Service® and the associated logos are owned by The Canadian Real Estate Association (CREA) and identify the quality of services provided by real estate professionals who are members of CREA. Used under license.