

# \$609,900 - 226 Edith Road Nw, Calgary

MLS® #A2228521

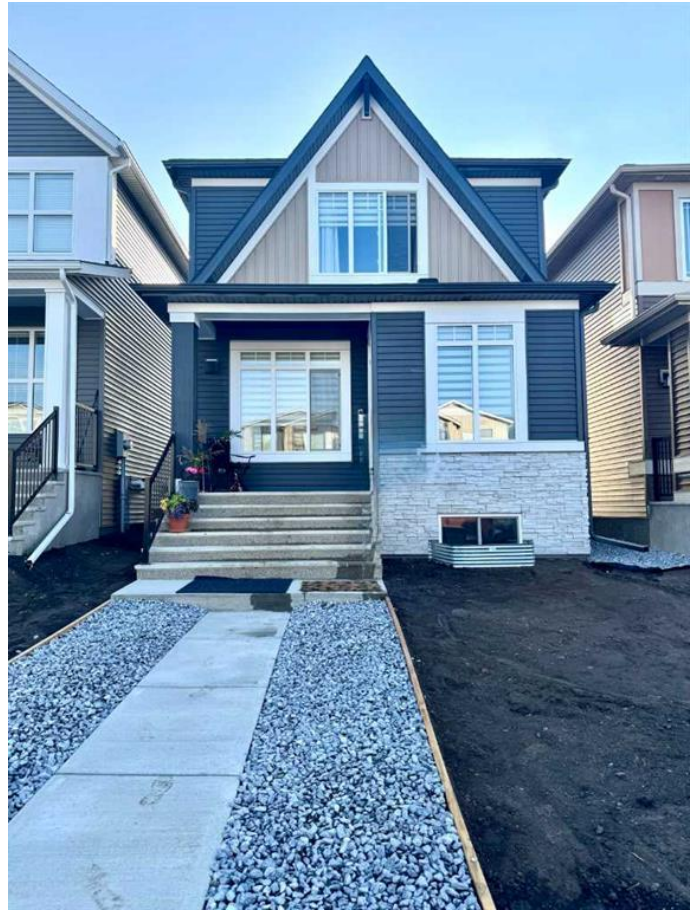
**\$609,900**

3 Bedroom, 3.00 Bathroom, 1,601 sqft

Residential on 0.06 Acres

Glacier Ridge, Calgary, Alberta

Welcome to this beautifully crafted, 2025-built new home located in the dynamic and rapidly growing community of Glacier Ridge. From the moment you step inside, you're greeted by timeless wainscoting details on the main floor and an abundance of natural light streaming through the east-facing front windows and west-facing backyardâ€™perfect for enjoying morning sunrises and Calgaryâ€™s legendary sunsets. With over 1,600 sq. ft. of above-grade living space, this home showcases stunning craftsmanship, thoughtful design with over \$30K in upgrades. The unique open floor plan features luxury vinyl plank flooring and large windows at both the front and back of the home, flooding the space with natural light all day long. This beautiful home boasts a gourmet kitchen with a striking island and flush eating bar, along with sleek stainless steel LG appliances, including a French door refrigerator with ice maker, LG gas range, built-in LG microwave with trim kit, and a chimney hood fan. Elegant Luxe White quartz countertops, a spacious walk-in pantry, soft-close slab high end cabinets, and a Silgranit Coal Black undermount single-bowl sink complete the space with style and functionality. Enjoy the generous dining area that overlooks the spacious Great Room, all complemented by the charming Arts & Crafts elevation at the front of the home. Upstairs, the second level features three sizeable bedrooms, including a luxurious primary suite with a private 4-piece ensuite and a generous



walk-in closet. A nicely centralized bonus room separates the primary suite from the two additional bedrooms, providing added privacy and flexibility. The unfinished lower level includes 9 feet high ceiling, a 3-piece rough-in for future bathroom development with side separate entrance for your future label basement develop and the backyard offers plenty of space to build a oversized double detached garage at your convenience. Experience the lifestyle you and your family deserve in a beautiful, welcoming community youâ€™ll enjoy for years to come! the house has one year builder's warranty and Alberta new home warranty, the builder will finished the front landscaping. the back and side was done by the owner recently.

Built in 2025

**Essential Information**

MLS® #	A2228521
Price	\$609,900
Bedrooms	3
Bathrooms	3.00
Full Baths	2
Half Baths	1
Square Footage	1,601
Acres	0.06
Year Built	2025
Type	Residential
Sub-Type	Detached
Style	2 Storey
Status	Active

**Community Information**

Address	226 Edith Road Nw
Subdivision	Glacier Ridge
City	Calgary
County	Calgary

Province Alberta  
Postal Code T3R 2C7

## Amenities

Parking Spaces 2  
Parking Off Street, Parking Pad

## Interior

Interior Features Breakfast Bar, Kitchen Island, Open Floorplan, Pantry, Quartz Counters, Separate Entrance, walk-in Closet(s), French Door, Smart Home  
Appliances Dishwasher, Gas Range, Microwave, Range Hood, Refrigerator, Washer/Dryer, Window Coverings  
Heating Forced Air  
Cooling None  
Has Basement Yes  
Basement Exterior Entry, Full, Unfinished

## Exterior

Exterior Features Lighting  
Lot Description Back Lane  
Roof Asphalt Shingle  
Construction Stone, Wood Frame  
Foundation Poured Concrete

## Additional Information

Date Listed June 5th, 2025  
Days on Market 9  
Zoning R-G

## Listing Details

Listing Office Skyrock



Data is supplied by Pillar 9â„¢ MLSÂ® System. Pillar 9â„¢ is the owner of the copyright in its MLSÂ® System. Data is deemed reliable but is not guaranteed accurate by Pillar 9â„¢. The trademarks MLSÂ®, Multiple Listing ServiceÂ® and the associated logos are owned by The Canadian Real Estate Association (CREA) and identify the quality of services provided by real estate professionals who are members of CREA. Used under license.