

\$214,000 - 6040 Spruce Crescent, Stettler

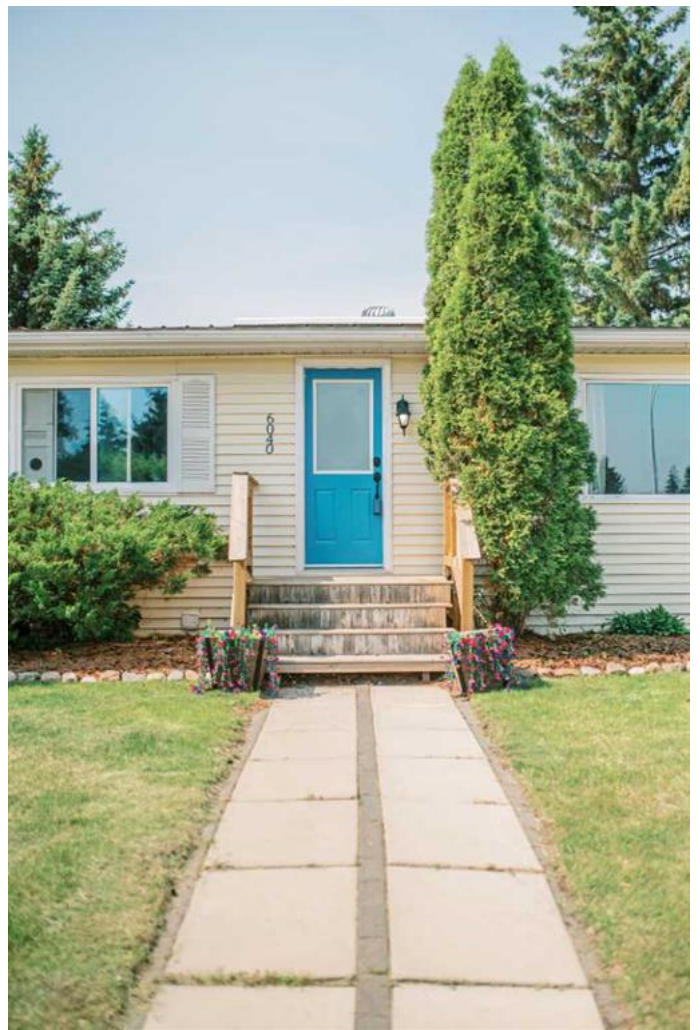
MLS® #A2231247

\$214,000

3 Bedroom, 2.00 Bathroom, 1,518 sqft
Residential on 0.13 Acres

Grandview, Stettler, Alberta

Welcome to 6040 Spruce Crescent, a beautifully updated manufactured home on an owned lot in a great location—across from a green space and close to the walking trails and The Stettler Rec Centre. With stylish updates inside and out, this home is move-in ready and offers comfort, convenience, and a touch of modern charm. Inside, you’ll find a fresh, modern look with updated laminate flooring, neutral paint throughout (all redone in the past four years), and sleek finishes from top to bottom. The kitchen has been refreshed with newer appliances—including a 2024 fridge—and flows into a bright and open living area. All lighting has been updated, most with energy-efficient LEDs, adding to the home’s crisp and inviting feel. The spacious primary bedroom features a walk-through closet leading to a full en-suite, while the second bathroom has also been tastefully updated. The washer is just three years old, and the water heater was replaced in 2019. Furnace and dryer ducts have recently been cleaned, adding peace of mind. Step outside to enjoy a maintenance-free lifestyle with a newer pergola over the deck, a concrete patio below, and a fenced yard surrounded by vinyl fencing with a new wood gate. The tin roof offers long-term durability, and both front and back doors were replaced just three years ago. The detached single garage has recently been insulated and upgraded with a brand-new concrete floor—perfect for storage, parking, or a hobby



space. Youâ€™ll also appreciate the three off-street parking spaces. If youâ€™re looking for a move-in ready home with modern updates and a great Stettler location, 6040 Spruce Crescent delivers both value and style.

Essential Information

MLS® #	A2231247
Price	\$214,000
Bedrooms	3
Bathrooms	2.00
Full Baths	2
Square Footage	1,518
Acres	0.13
Type	Residential
Sub-Type	Detached
Style	Bungalow
Status	Active

Community Information

Address	6040 Spruce Crescent
Subdivision	Grandview
City	Stettler
County	Stettler No. 6, County of
Province	Alberta
Postal Code	T4K 1G6

Amenities

Parking Spaces	3
Parking	Insulated, Off Street, Single Garage Attached
# of Garages	1

Interior

Interior Features	Ceiling Fan(s), Walk-In Closet(s)
Appliances	Dishwasher, Dryer, Refrigerator, Stove(s), Washer
Heating	Forced Air, Natural Gas
Cooling	None
Basement	None

Exterior

Exterior Features	Garden
Lot Description	Views
Roof	Metal
Construction	Vinyl Siding
Foundation	None



Additional Information

Date Listed	June 24th, 2025
Days on Market	1
Zoning	R3A

Listing Details

Listing Office	Real Broker
----------------	-------------

Data is supplied by Pillar 9â„¢ MLS® System. Pillar 9â„¢ is the owner of the copyright in its MLS® System. Data is deemed reliable but is not guaranteed accurate by Pillar 9â„¢. The trademarks MLS®, Multiple Listing Service® and the associated logos are owned by The Canadian Real Estate Association (CREA) and identify the quality of services provided by real estate professionals who are members of CREA. Used under license.