

\$549,900 - 42 Hallgren Drive, Sylvan Lake

MLS® #A2231907

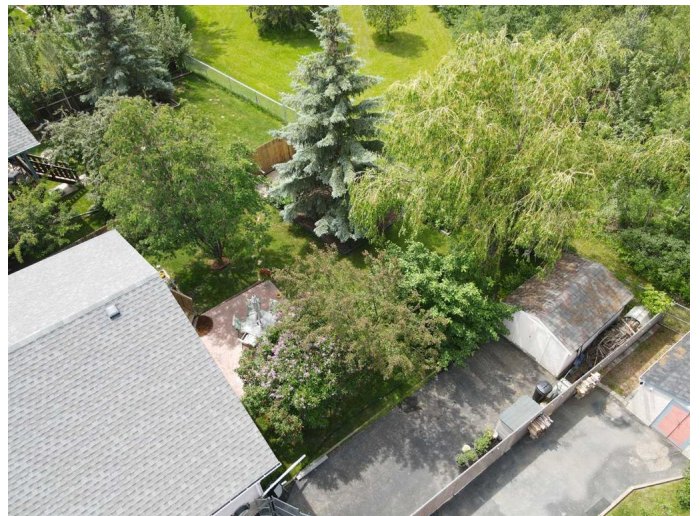
\$549,900

6 Bedroom, 3.00 Bathroom, 1,462 sqft
Residential on 0.18 Acres

Hewlett Park, Sylvan Lake, Alberta

Welcome to this exceptional 6-bedroom bungalow—a true family retreat that seamlessly blends spacious design and upscale comfort. Set on a generous lot backing onto a beautiful park, the mature trees offer a serene, private backyard sanctuary perfect for gatherings or quiet relaxation. Inside, the bright and open main floor invites effortless entertaining, with gleaming hardwood floors, rich maple cabinetry, and a cozy gas fireplace anchoring the living area. Downstairs, a thoughtfully designed lower level features a second gas fireplace and a superb entertainment hub ideal for movie nights, games, or hosting guests. The home's comforts extend beyond style: central air conditioning, in-slab heating in both the garage and basement, and newer shingles ensure year-round efficiency and ease. The attached true double garage makes winter mornings a breeze. Retreat to the primary bedroom—roomy enough for a king bed and extra storage if needed, a walk-in closet, and a spa-like ensuite boasting dual sinks, a soaker tub, and a separate shower. With six bedrooms (three upstairs, three downstairs), the home offers versatility for family, office space, or hobbies. Combining elegant finishes, modern amenities, and a private park-side setting, this bungalow offers a lifestyle of comfort, convenience, and tranquility.

Built in 1999



Essential Information

| | |
|----------------|-------------|
| MLS® # | A2231907 |
| Price | \$549,900 |
| Bedrooms | 6 |
| Bathrooms | 3.00 |
| Full Baths | 3 |
| Square Footage | 1,462 |
| Acres | 0.18 |
| Year Built | 1999 |
| Type | Residential |
| Sub-Type | Detached |
| Style | Bungalow |
| Status | Active |

Community Information

| | |
|-------------|-------------------|
| Address | 42 Hallgren Drive |
| Subdivision | Hewlett Park |
| City | Sylvan Lake |
| County | Red Deer County |
| Province | Alberta |
| Postal Code | T4S1W9 |

Amenities

| | |
|----------------|------------------------|
| Parking Spaces | 2 |
| Parking | Double Garage Attached |
| # of Garages | 2 |

Interior

| | |
|-------------------|---------------------------------------|
| Interior Features | Kitchen Island, Pantry, Vinyl Windows |
| Appliances | None |
| Heating | In Floor, Forced Air |
| Cooling | Central Air |
| Fireplace | Yes |
| # of Fireplaces | 2 |
| Fireplaces | Gas |
| Has Basement | Yes |
| Basement | Finished, Full |

Exterior

| | |
|-------------------|---|
| Exterior Features | Fire Pit, Garden, Private Yard |
| Lot Description | Back Yard, Few Trees, Garden, No Neighbours Behind, Pie Shaped Lot, Private |
| Roof | Asphalt Shingle |
| Construction | Stucco |
| Foundation | Poured Concrete |

Additional Information

| | |
|-------------|-----------------|
| Date Listed | June 25th, 2025 |
| Zoning | R1 |

Listing Details

| | |
|----------------|------------|
| Listing Office | KIC Realty |
|----------------|------------|

Data is supplied by Pillar 9â„¢ MLS® System. Pillar 9â„¢ is the owner of the copyright in its MLS® System. Data is deemed reliable but is not guaranteed accurate by Pillar 9â„¢. The trademarks MLS®, Multiple Listing Service® and the associated logos are owned by The Canadian Real Estate Association (CREA) and identify the quality of services provided by real estate professionals who are members of CREA. Used under license.