

\$990,000 - 39321 Range Road 273, Rural Lacombe County

MLS® #A2233388

\$990,000

4 Bedroom, 3.00 Bathroom, 1,240 sqft
Residential on 18.36 Acres

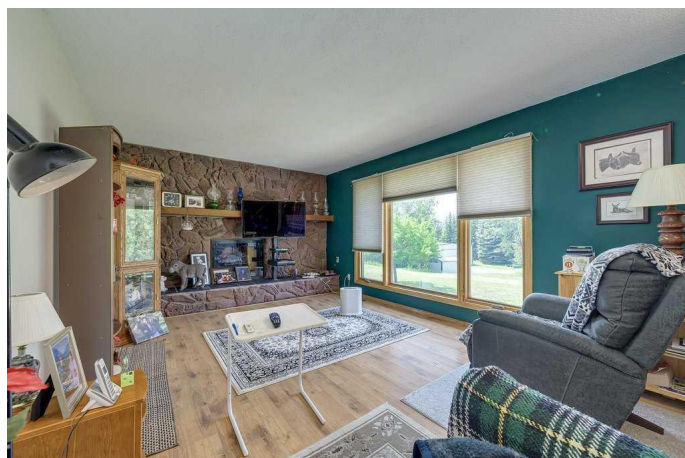
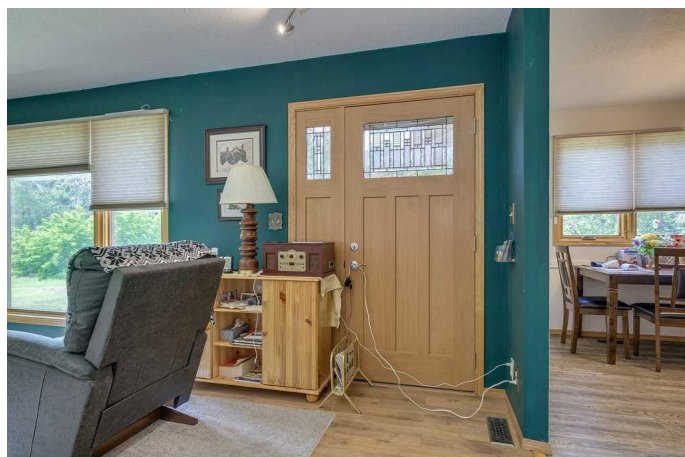
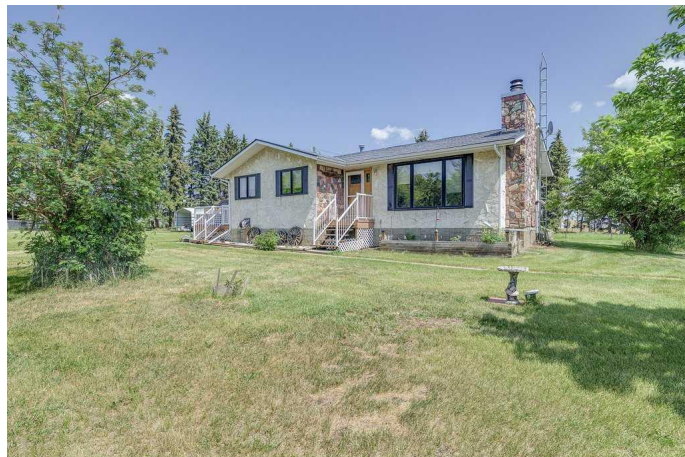
NONE, Rural Lacombe County, Alberta

Great opportunity to own a beautiful acreage minutes to both Red Deer and Blackfalds. 18.51 acres with a 1240 sq ft bungalow, detached double garage and large shop. The home is nestled in privacy on the property. With 3 bedrooms on the main floor and a 4th one in the lower level, lots of room for everyone. Air conditioning will keep you cool in the summer and the new wood burning pellet stove will keep you warm in the winter. There is a backup generator in place for the circumstance of power loss, to keep the essentials running. Large shop to hold all of the equipment and space to work.

Built in 1978

Essential Information

| | |
|----------------|-------------|
| MLS® # | A2233388 |
| Price | \$990,000 |
| Bedrooms | 4 |
| Bathrooms | 3.00 |
| Full Baths | 2 |
| Half Baths | 1 |
| Square Footage | 1,240 |
| Acres | 18.36 |
| Year Built | 1978 |
| Type | Residential |
| Sub-Type | Detached |



| | |
|--------|----------------------------------|
| Style | Acreage with Residence, Bungalow |
| Status | Active |

Community Information

| | |
|-------------|----------------------|
| Address | 39321 Range Road 273 |
| Subdivision | NONE |
| City | Rural Lacombe County |
| County | Lacombe County |
| Province | Alberta |
| Postal Code | T0M 0J0 |

Amenities

| | |
|--------------|------------------------|
| Parking | Double Garage Detached |
| # of Garages | 2 |

Interior

| | |
|-------------------|--|
| Interior Features | Laminate Counters, Vinyl Windows |
| Appliances | Central Air Conditioner, Dishwasher, Microwave, Refrigerator, Stove(s), Window Coverings |
| Heating | Forced Air, Natural Gas |
| Cooling | Central Air |
| Fireplace | Yes |
| # of Fireplaces | 1 |
| Fireplaces | Basement, Wood Burning, Pellet Stove |
| Has Basement | Yes |
| Basement | Finished, Full |

Exterior

| | |
|-------------------|--|
| Exterior Features | Private Yard |
| Lot Description | Fruit Trees/Shrub(s), Many Trees, Treed, Brush, Wooded |
| Roof | Asphalt Shingle |
| Construction | Stucco, Wood Frame |
| Foundation | Poured Concrete |

Additional Information

| | |
|----------------|-----------------|
| Date Listed | June 21st, 2025 |
| Days on Market | 14 |
| Zoning | 1 |

Listing Details

Listing Office

Royal LePage Network Realty Corp.

Data is supplied by Pillar 9â„¢ MLSÂ® System. Pillar 9â„¢ is the owner of the copyright in its MLSÂ® System. Data is deemed reliable but is not guaranteed accurate by Pillar 9â„¢. The trademarks MLSÂ®, Multiple Listing ServiceÂ® and the associated logos are owned by The Canadian Real Estate Association (CREA) and identify the quality of services provided by real estate professionals who are members of CREA. Used under license.