

\$729,800 - 77 Fairmont Park Landing S, Lethbridge

MLS® #A2233414

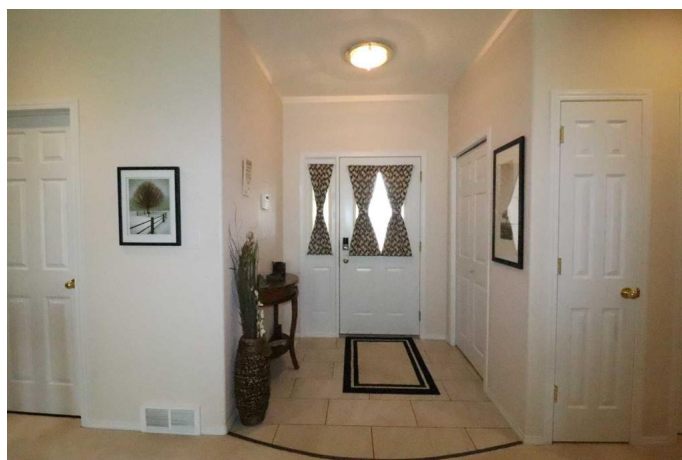
\$729,800

5 Bedroom, 3.00 Bathroom, 1,770 sqft

Residential on 0.17 Acres

Fairmont, Lethbridge, Alberta

Pride of ownership is evident from the moment you arrive and throughout the entire property. Located at the end of a cul-de-sac in a quiet, family friendly neighbourhood, this large pie lot plays host to this 1770 sq ft Executive Bungalow with peaceful views to the open greenspace and Fairmont Lake. Impressive in appeal and functionality, the design of the home lends itself well to your day-to-day lifestyle and for hosting family and guests. This 5-bedroom, 3-bathroom floor plan offers plenty of room for everyone. Having a large kitchen with an exceptional amount of solid oak cabinetry, oversized island, convenient breakfast bar, walk-in pantry, and additional storage cabinetry and desktop is high on the list for most families. Large windows in the breakfast nook, dining room, living room, and primary bedroom allow for open space views beyond your back yard. Additional interior features include elevated 9' ceilings on the main level, a gas fireplace, a spacious primary bedroom, walk-in closet, and full ensuite complete with a jetted tub, plus an impressive full-sized laundry room with plenty of quality storage cabinetry and counter space, sink, and enough room for an upright freezer or additional refrigerator. The lower-level walk-out basement feature is exceptional and allows you to take full advantage of your backyard and covered patio. Natural gas lines for your BBQ are provided on both the upper sun deck and ground level patio. In-floor radiant heating provides lower-level comfort to



3 more bedrooms, a unique split bathroom that allows for simultaneous usage, family room, games room, and craft/hobby room. Enjoy the ambience provided by a 2nd thermostatically controlled gas fireplace. The oversized windows provided by the walk-out elevation light up the entire area and makes the living space more appealing and enjoyable. The garage is yet another bonus as it measures 31' x 24' with an 11' ceiling height and side access door. You can keep your vehicles toasty warm in the winter by way of the in-floor radiant heating system. The epoxy finish floor, large work bench and extra storage space add to the WOW factor. Nearby amenities are fantastic with plenty of shopping, restaurants, sports facilities, Lethbridge Polytechnic, and walking paths for miles!

Built in 1999

Essential Information

MLS® #	A2233414
Price	\$729,800
Bedrooms	5
Bathrooms	3.00
Full Baths	3
Square Footage	1,770
Acres	0.17
Year Built	1999
Type	Residential
Sub-Type	Detached
Style	Bungalow
Status	Active

Community Information

Address	77 Fairmont Park Landing S
Subdivision	Fairmont
City	Lethbridge
County	Lethbridge

Province	Alberta
Postal Code	T1K 7L1

Amenities

Parking Spaces	2
Parking	Double Garage Attached, Heated Garage, Oversized
# of Garages	2

Interior

Interior Features	Closet Organizers, Jetted Tub, Pantry
Appliances	Dishwasher, Microwave, Range Hood, Refrigerator, Stove(s)
Heating	In Floor, Fireplace(s), Forced Air
Cooling	Central Air
Fireplace	Yes
# of Fireplaces	2
Fireplaces	Family Room, Gas, Living Room
Has Basement	Yes
Basement	Finished, Full, Walk-Out

Exterior

Exterior Features	None
Lot Description	Backs on to Park/Green Space, Cul-De-Sac, Landscaped, Underground Sprinklers
Roof	Asphalt Shingle
Construction	Stucco
Foundation	Poured Concrete

Additional Information

Date Listed	June 24th, 2025
Days on Market	2
Zoning	R-L

Listing Details

Listing Office	Royal LePage South Country - Lethbridge
----------------	---

Data is supplied by Pillar 9â„¢ MLS® System. Pillar 9â„¢ is the owner of the copyright in its MLS® System. Data is deemed reliable but is not guaranteed accurate by Pillar 9â„¢. The trademarks MLS®, Multiple Listing Service® and the associated logos are owned by The Canadian Real Estate Association (CREA) and identify the quality of services provided by real estate professionals who are members of CREA. Used under license.