

\$219,900 - 19, 3406 20 Avenue S, Lethbridge

MLS® #A2234018

\$219,900

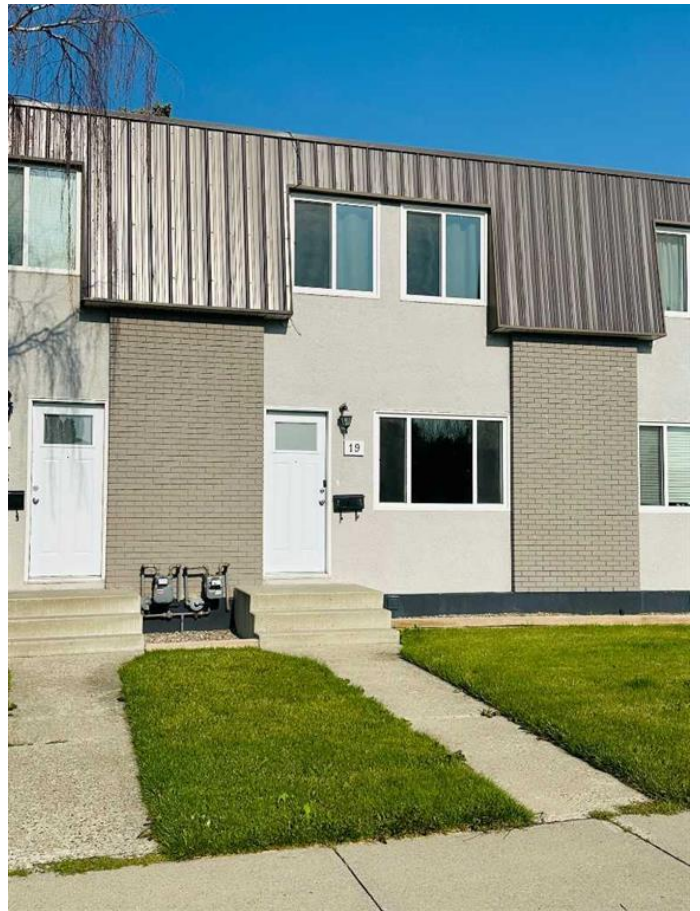
3 Bedroom, 1.00 Bathroom, 886 sqft

Residential on 0.00 Acres

Redwood, Lethbridge, Alberta

Fully developed with your own fenced in yard and off street parking space! This townhome is move in ready and ready for quick possession. Offering 3 bedrooms up and updated bathroom, large open concept living/dining, basement developed with large family room, storage room and utility/laundry room equip with newer washer/dryer set and high efficiency furnace with new motor. \$270 monthly condo fee covers front lawn, front/back snow removal, property management, Reserve Fund Contributions.

Built in 1972



Essential Information

MLS® #	A2234018
Price	\$219,900
Bedrooms	3
Bathrooms	1.00
Full Baths	1
Square Footage	886
Acres	0.00
Year Built	1972
Type	Residential
Sub-Type	Row/Townhouse
Style	2 Storey
Status	Active

Community Information

Address 19, 3406 20 Avenue S

Subdivision	Redwood
City	Lethbridge
County	Lethbridge
Province	Alberta
Postal Code	T1K 3M5

Amenities

Amenities	Parking, Snow Removal
Parking Spaces	1
Parking	Off Street, Plug-In

Interior

Interior Features	Storage, Laminate Counters
Appliances	Electric Stove, Range Ho Coverings
Heating	Forced Air, Natural Gas
Cooling	None
Fireplace	Yes
# of Fireplaces	1
Fireplaces	Electric, Living Room
Has Basement	Yes
Basement	Finished, Full

Exterior

Exterior Features	Other
Lot Description	Landscaped
Roof	Tar/Gravel
Construction	Brick, Stucco
Foundation	Poured Concrete

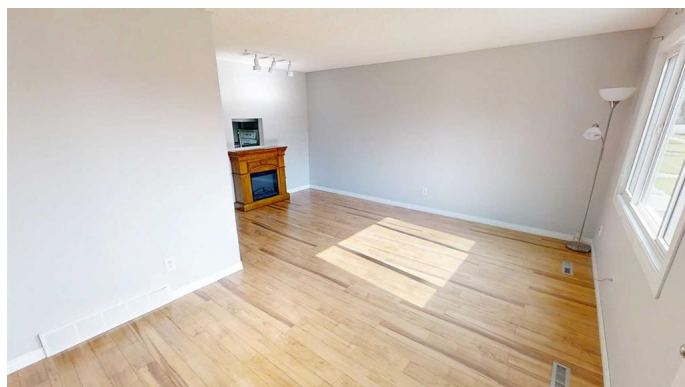
Additional Information

Date Listed	June 24th, 2025
Days on Market	3
Zoning	R-60

Listing Details

Listing Office	RE/MAX REAL ESTATE - LETHBRIDGE
----------------	---------------------------------

Data is supplied by Pillar 9â„¢ MLSÂ® System. Pillar 9â„¢ is the owner of the copyright in its MLSÂ® System. Data is deemed reliable but is not guaranteed accurate by Pillar 9â„¢. The trademarks MLSÂ®, Multiple Listing ServiceÂ® and the associated logos are owned by The Canadian Real Estate Association (CREA) and identify the quality of services



provided by real estate professionals who are members of CREA. Used under license.