

\$315,000 - 229, 510 Edmonton Trail Ne, Calgary

MLS® #A2234322

\$315,000

1 Bedroom, 1.00 Bathroom, 575 sqft

Residential on 0.00 Acres

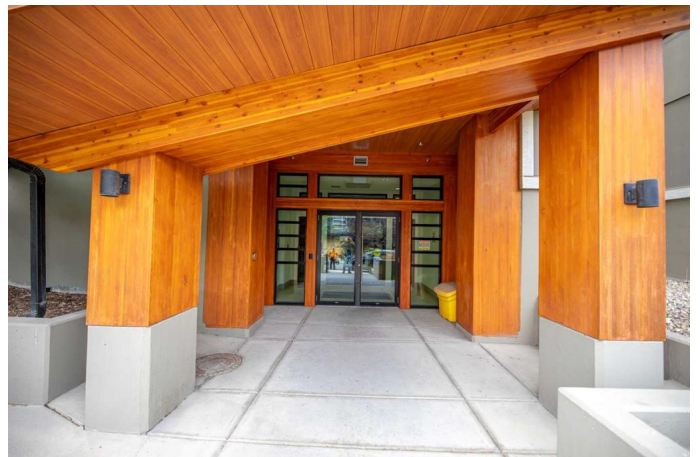
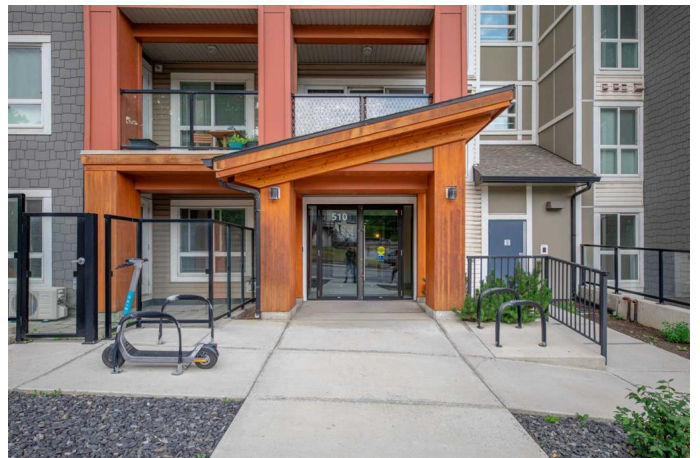
Bridgeland/Riverside, Calgary, Alberta

You enter into a spacious layout, all with upgraded laminate flooring, that quickly leads you to the kitchen with tons of gleaming cupboards, under cabinet lighting that highlight the quartz counter tops, stainless steel appliances, eat up area, and undermount sink. Just off the kitchen is a dining or den area that leads you to the bright and sunny living room with an additional wrap around window, that looks out the patio doors to the west facing deck that has extra shade, with a view over downtown! The bedroom has plenty of space for bedroom furniture, along with a large window dresser, or den area, and a walk through closet with in suite laundry to a four piece cheater en-suite! Topped off with built in A/C, and a newer building that has a large courtyard, fitness center, bike storage, and underground parking with tall ceilings, all in an amazing location that can walk to downtown, and has tons of amenities and shopping around the corner! Call today for your own private showing!

Built in 2016

Essential Information

MLS® #	A2234322
Price	\$315,000
Bedrooms	1
Bathrooms	1.00
Full Baths	1



Square Footage	575
Acres	0.00
Year Built	2016
Type	Residential
Sub-Type	Apartment
Style	Single Level Unit
Status	Active

Community Information

Address	229, 510 Edmonton Trail Ne
Subdivision	Bridgeland/Riverside
City	Calgary
County	Calgary
Province	Alberta
Postal Code	T2E 3H1

Amenities

Amenities	Bicycle Storage, Elevator(s), Fitness Center, Park, Parking, Secured Parking, Visitor Parking
Parking Spaces	1
Parking	Parkade, Stall, Underground

Interior

Interior Features	No Smoking Home, Stone Counters, Vinyl Windows
Appliances	Dishwasher, Gas Stove, Microwave Hood Fan, Refrigerator, Washer/Dryer Stacked
Heating	Baseboard
Cooling	Wall Unit(s)
# of Stories	4

Exterior

Exterior Features	Balcony, Courtyard
Construction	Composite Siding, Metal Siding, Wood Frame

Additional Information

Date Listed	June 26th, 2025
Days on Market	4
Zoning	M-C2

Listing Details

Data is supplied by Pillar 9â„¢ MLSÂ® System. Pillar 9â„¢ is the owner of the copyright in its MLSÂ® System. Data is deemed reliable but is not guaranteed accurate by Pillar 9â„¢. The trademarks MLSÂ®, Multiple Listing ServiceÂ® and the associated logos are owned by The Canadian Real Estate Association (CREA) and identify the quality of services provided by real estate professionals who are members of CREA. Used under license.