

# \$394,900 - 141 Somerset Road Se, Medicine Hat

MLS® #A2235056

**\$394,900**

4 Bedroom, 2.00 Bathroom, 898 sqft

Residential on 0.12 Acres

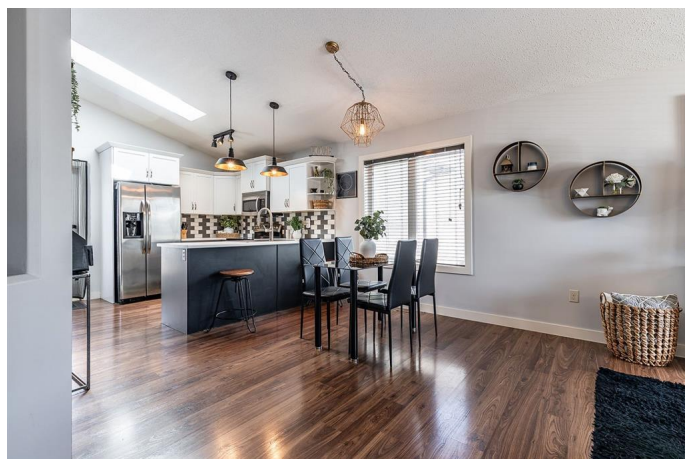
Southland, Medicine Hat, Alberta

Charming bi-level located in Southlands within close walking distance to parks, schools and pathways. This is a fantastic option for folks starting out at an affordable price offering 4 bedrooms (2+2), 2 full bathroom and a spacious yard that is fully fenced with room to build a garage down the road. The tile entry way, vaulted ceilings and skylight are lovely features, enjoy the open concept floor plan, and excellent natural light. This home comes equipped with a high-Efficiency Furnace, tankless Hot Water, Sol-R Shield Windows, central air, a full stainless steel appliance package, washer & dryer, window coverings and been recently painted. Offering lovely curb appeal with the added bonus of a concrete parking pad. Out back enjoy the deck area directly off the kitchen and a private lower deck space. Back Alley access is a fantastic bonus when you want to gain access to your yard or potentially build that garage! Great home at an affordable price!

Built in 2010

## Essential Information

MLS® #	A2235056
Price	\$394,900
Bedrooms	4
Bathrooms	2.00
Full Baths	2
Square Footage	898



Acres	0.12
Year Built	2010
Type	Residential
Sub-Type	Detached
Style	Bi-Level
Status	Active

### **Community Information**

Address	141 Somerset Road Se
Subdivision	Southland
City	Medicine Hat
County	Medicine Hat
Province	Alberta
Postal Code	T1B 0G7

### **Amenities**

Parking Spaces	3
Parking	Concrete Driveway, Parking Pad

### **Interior**

Interior Features	Vaulted Ceiling(s)
Appliances	Central Air Conditioner, Dishwasher, Microwave Hood Fan, Refrigerator, Stove(s), Washer/Dryer, Window Coverings
Heating	Forced Air
Cooling	Central Air
Has Basement	Yes
Basement	Finished, Full

### **Exterior**

Exterior Features	Private Yard
Lot Description	Back Yard
Roof	Asphalt Shingle
Construction	Stone, Shingle Siding
Foundation	Poured Concrete

### **Additional Information**

Date Listed	June 28th, 2025
Days on Market	2
Zoning	R-LD

**Listing Details**

Listing Office                REAL BROKER

Data is supplied by Pillar 9â„¢ MLSÂ® System. Pillar 9â„¢ is the owner of the copyright in its MLSÂ® System. Data is deemed reliable but is not guaranteed accurate by Pillar 9â„¢. The trademarks MLSÂ®, Multiple Listing ServiceÂ® and the associated logos are owned by The Canadian Real Estate Association (CREA) and identify the quality of services provided by real estate professionals who are members of CREA. Used under license.