

# \$285,000 - 134 St James Boulevard N, Lethbridge

---

MLS® #A2235698

## \$285,000

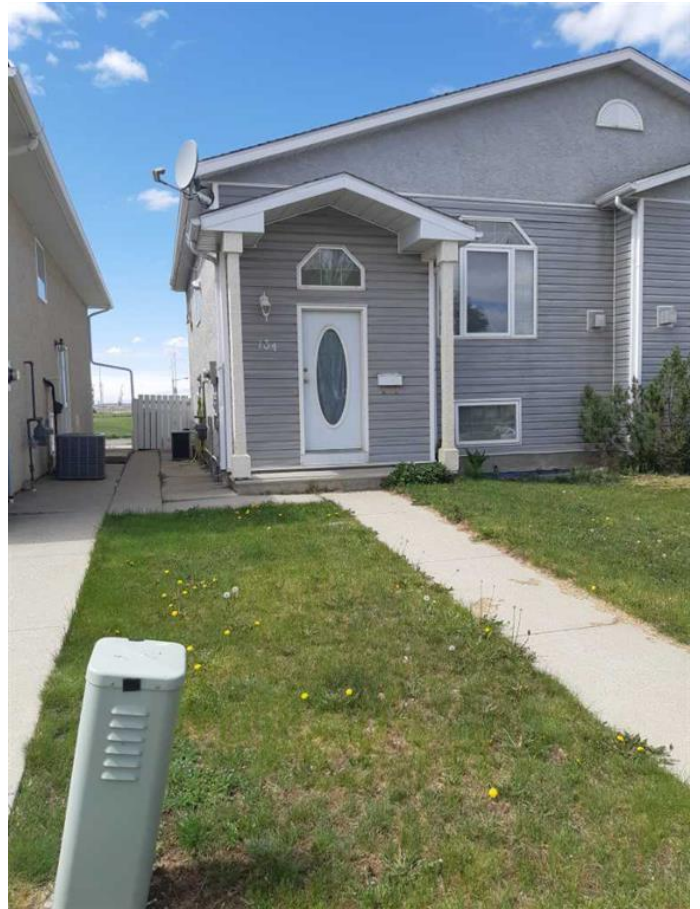
4 Bedroom, 2.00 Bathroom, 835 sqft

Residential on 0.06 Acres

St Edwards, Lethbridge, Alberta

BEAUTIFUL HALF DUPLEX FOR SALE IN THE NORTH SIDE, LETHBRIDGE CLOSE TO WALMART. 4 GOOD SIZED BEDROOMS - NONE TOO SMALL, MASTER HAS A WALK IN CLOSET.- 1.5 BATHROOMS. HOUSE HAS SET UP FOR JACUZZI BATH , AIR CONDITION AS WELL AS CENTRAL VACUUM- JUST NEED TO HOOK THEM UP IF YOU WISH. DECK OVERLOOKING THE MOUNTAINS, IN A QUIET STREET. VERY GOOD CONDITION AND WELL TAKEN CARE OF WITH IMPECABLE FINISHING.

Built in 1999



## Essential Information

MLS® #	A2235698
Price	\$285,000
Bedrooms	4
Bathrooms	2.00
Full Baths	1
Half Baths	1
Square Footage	835
Acres	0.06
Year Built	1999
Type	Residential
Sub-Type	Semi Detached
Style	Side by Side, Bi-Level
Status	Active

## Community Information

Address 134 St James Boulevard N  
Subdivision St Edwards  
City Lethbridge  
County Lethbridge  
Province Alberta  
Postal Code T1H6M4

### Amenities

Parking Spaces 2  
Parking Parking Pad

### Interior

Interior Features See Remarks  
Appliances Dishwasher, Microwave, Refrigerator  
Heating Central, Natural Gas  
Cooling None  
Fireplace Yes  
# of Fireplaces 1  
Fireplaces Gas  
Has Basement Yes  
Basement Full, Partially Finished

### Exterior

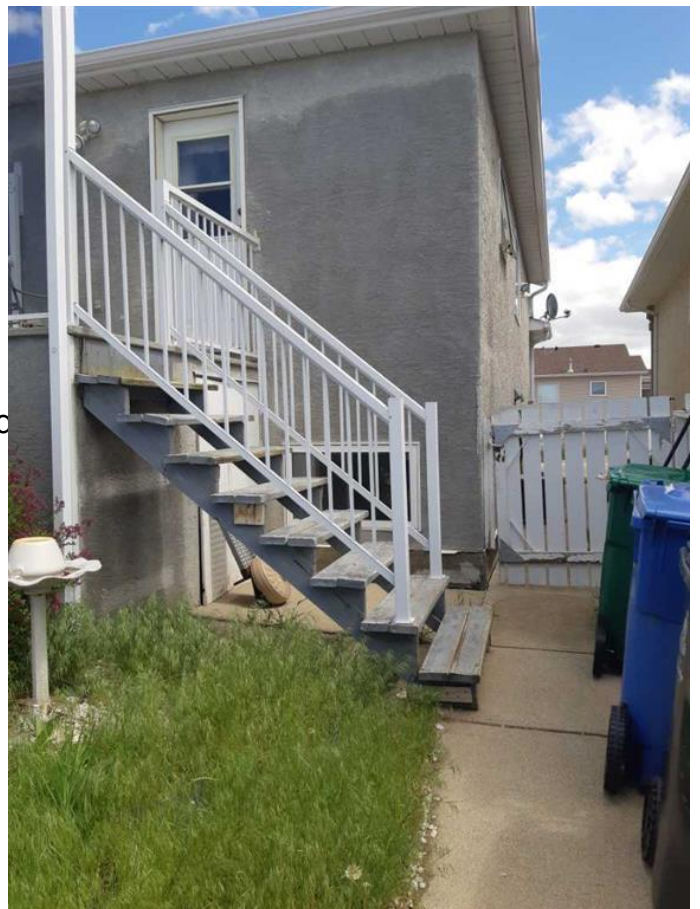
Exterior Features None  
Lot Description Back Lane  
Roof Asphalt Shingle  
Construction Concrete, Vinyl Siding, Wood Siding  
Foundation Poured Concrete

### Additional Information

Date Listed June 30th, 2025  
Days on Market 4  
Zoning R-37

### Listing Details

Listing Office Revere



Data is supplied by Pillar 9â„¢ MLSÂ® System. Pillar 9â„¢ is the owner of the copyright in its MLSÂ® System. Data is deemed reliable but is not guaranteed accurate by Pillar 9â„¢. The trademarks MLSÂ®, Multiple Listing ServiceÂ® and the associated logos are owned by The Canadian Real Estate Association (CREA) and identify the quality of services provided by real estate professionals who are members of CREA. Used under license.