

\$166,000 - 129, 13379 670 Township, Lac La Biche

MLS® #A2237346

\$166,000

0 Bedroom, 0.00 Bathroom,
Land on 0.51 Acres

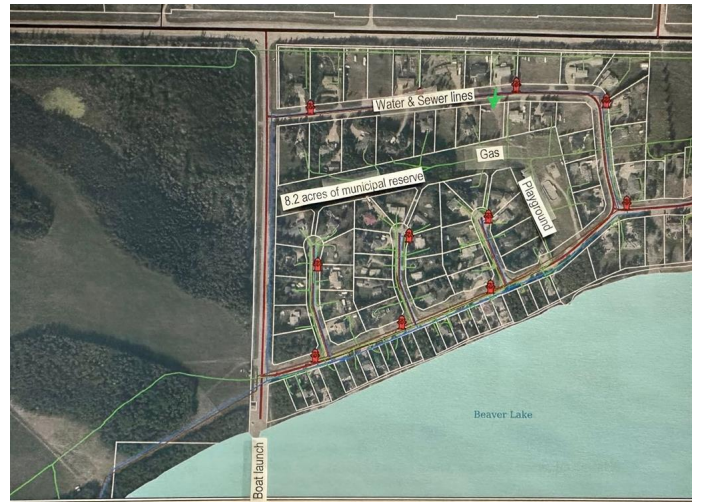
Lac La Biche, Lac La Biche, Alberta

Looking for the perfect place to build your dream home? This half-acre lot in one of Lac La Biche County's most sought-after subdivisionsâ€™Holowachuk Estatesâ€™offers incredible value and lifestyle! Located within walking distance to beautiful Beaver Lake, this lot is fully serviced with municipal water and sewer to the property line, along with power, natural gas, and garbage pickup.

Enjoy the peace and privacy of backing onto 8.2 acres of municipal reserve with a playground, outdoor skating rink, and picnic area just steps from your future backyard. Bring your boat, kayak, paddleboard, water toys, and fishing rod down to the handy boat launch or fish off the shore! The subdivision also features its own boat launch with a dock, postal delivery, and school bus serviceâ€™everything you need for comfortable, year-round living. There are atv and snow mobile trails near by for you to explore!

Essential Information

MLS® #	A2237346
Price	\$166,000
Bathrooms	0.00
Acres	0.51
Type	Land
Sub-Type	Residential Land



Status Active

Community Information

Address 129, 13379 670 Township
Subdivision Lac La Biche
City Lac La Biche
County Lac La Biche County
Province Alberta
Postal Code T0A 2C1

Additional Information

Date Listed July 5th, 2025
Days on Market 8
Zoning Low Density Hamlet Reside

Listing Details

Listing Office RE/MAX LA BICHE REALTY

Data is supplied by Pillar 9â„¢ MLS® System. Pillar 9â„¢ is the owner of the copyright in its MLS® System. Data is deemed reliable but is not guaranteed accurate by Pillar 9â„¢. The trademarks MLS®, Multiple Listing Service® and the associated logos are owned by The Canadian Real Estate Association (CREA) and identify the quality of services provided by real estate professionals who are members of CREA. Used under license.