

\$579,000 - 91 Sierra Road Sw, Medicine Hat

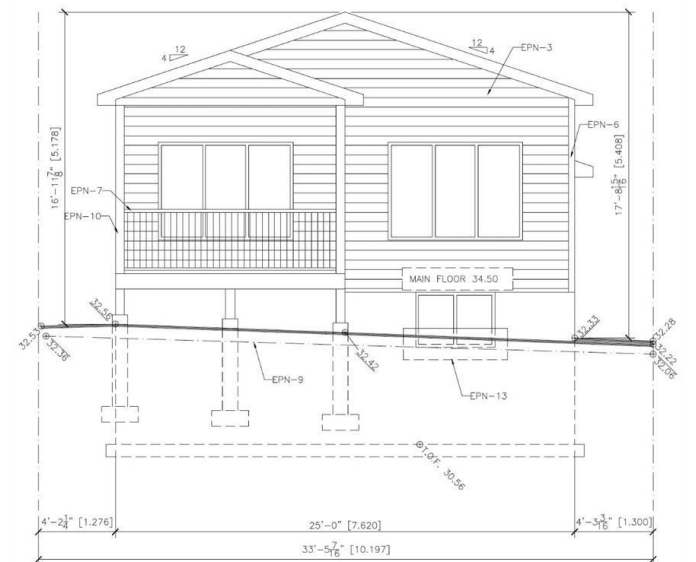
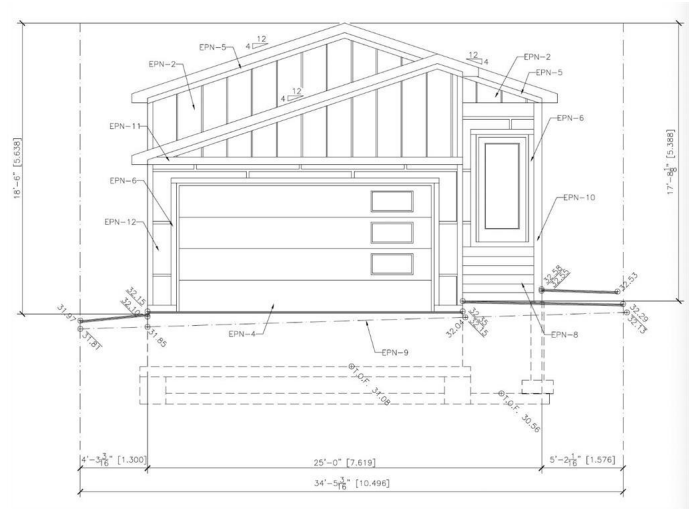
MLS® #A2237992

\$579,000

3 Bedroom, 3.00 Bathroom, 1,102 sqft
Residential on 0.09 Acres

SW Southridge, Medicine Hat, Alberta

This beautiful new construction bungalow blends style, comfort, and flexibility in over 1,100 sq. ft. of well-designed main floor living. Set in a growing community, this home offers the perfect opportunity to choose your own finishes and add your personal touch. Step inside to a bright and open main level that flows effortlessly from the spacious kitchen to the dining and living areas—ideal for both daily living and entertaining. The kitchen features a large central island with plenty of prep and storage space, while the adjacent dining and living area opens onto a 12x8 covered deck—perfect for easy indoor-outdoor living. The main level also includes a generous primary suite with a walk-in closet and a sleek 4-piece ensuite, plus a convenient 2-piece powder room and main floor laundry. Downstairs, the fully finished basement adds even more space with two additional bedrooms, a full bathroom, and a large family room—great for movie nights, guests, or kids—™ hangout space. A 19x23 double attached garage rounds out the package, offering room for vehicles, storage, and hobbies. Please note: This home is currently under construction with completion scheduled for Decmeber 2025. All measurements are taken from builder blueprints. Here—™s your chance to personalize a brand-new home with a thoughtful layout and timeless design—™don—™t miss it!



Built in 2025

Essential Information

| | |
|----------------|-------------|
| MLS® # | A2237992 |
| Price | \$579,000 |
| Bedrooms | 3 |
| Bathrooms | 3.00 |
| Full Baths | 2 |
| Half Baths | 1 |
| Square Footage | 1,102 |
| Acres | 0.09 |
| Year Built | 2025 |
| Type | Residential |
| Sub-Type | Detached |
| Style | Bungalow |
| Status | Active |

Community Information

| | |
|-------------|-------------------|
| Address | 91 Sierra Road Sw |
| Subdivision | SW Southridge |
| City | Medicine Hat |
| County | Medicine Hat |
| Province | Alberta |
| Postal Code | T1B 4Y6 |

Amenities

| | |
|----------------|------------------------|
| Parking Spaces | 4 |
| Parking | Double Garage Attached |
| # of Garages | 2 |

Interior

| | |
|-------------------|--|
| Interior Features | See Remarks |
| Appliances | Central Air Conditioner, Garage Control(s) |
| Heating | Forced Air, Natural Gas |
| Cooling | Central Air |
| Fireplace | Yes |
| # of Fireplaces | 1 |
| Fireplaces | Electric |
| Has Basement | Yes |

| | |
|----------|----------------|
| Basement | Finished, Full |
|----------|----------------|

Exterior

| | |
|-------------------|---|
| Exterior Features | Other |
| Lot Description | Other |
| Roof | Asphalt Shingle |
| Construction | Cement Fiber Board, Vinyl Siding, See Remarks |
| Foundation | Poured Concrete |

Additional Information

| | |
|----------------|----------------|
| Date Listed | July 8th, 2025 |
| Days on Market | 20 |
| Zoning | R-LD |

Listing Details

| | |
|----------------|----------------------------|
| Listing Office | RE/MAX MEDALTA REAL ESTATE |
|----------------|----------------------------|

Data is supplied by Pillar 9â„¢ MLS® System. Pillar 9â„¢ is the owner of the copyright in its MLS® System. Data is deemed reliable but is not guaranteed accurate by Pillar 9â„¢. The trademarks MLS®, Multiple Listing Service® and the associated logos are owned by The Canadian Real Estate Association (CREA) and identify the quality of services provided by real estate professionals who are members of CREA. Used under license.