

\$280,000 - 604, 650 10 Street Sw, Calgary

MLS® #A2238558

\$280,000

1 Bedroom, 1.00 Bathroom, 771 sqft

Residential on 0.00 Acres

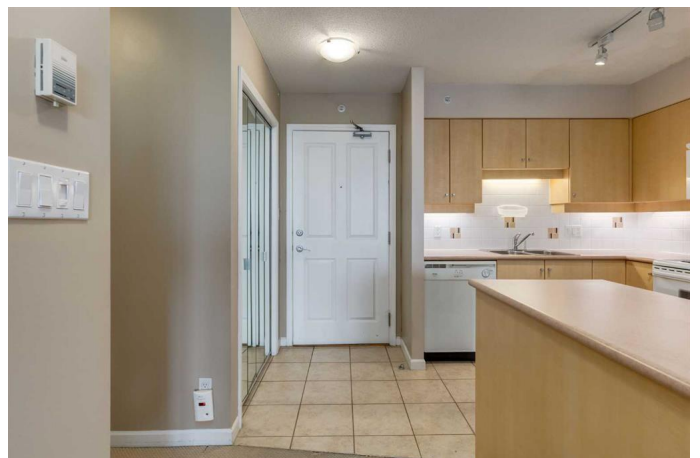
Downtown West End, Calgary, Alberta

Welcome to the Axxis building located in the heart of West Downtown. This unit features an open floorplan with carpet and tile flooring throughout. A large kitchen with plenty of upper and lower cabinetry and an island. Dining area and living room with a cozy corner fireplace. Large bedroom, a den that could be used as an office space and full 4pc bathroom. Assigned secured underground parking, storage locker and insuite laundry. Concrete building providing a quiet living and slight views of the Bow River. Amenities include a fitness centre and a party/recreation room. Just steps away from LRT Station, restaurants, shopping, pathways and the Bow River. Don't miss out on this opportunity. Make your private showing today.

Built in 2000

Essential Information

MLS® #	A2238558
Price	\$280,000
Bedrooms	1
Bathrooms	1.00
Full Baths	1
Square Footage	771
Acres	0.00
Year Built	2000
Type	Residential
Sub-Type	Apartment



Style	Single Level Unit
Status	Active

Community Information

Address	604, 650 10 Street Sw
Subdivision	Downtown West End
City	Calgary
County	Calgary
Province	Alberta
Postal Code	T2P 5G4

Amenities

Amenities	Bicycle Storage, Elevator(s), Fitness Center, Parking, Party Room, Secured Parking, Trash, Visitor Parking
Parking Spaces	1
Parking	Assigned, Underground

Interior

Interior Features	Laminate Counters
Appliances	Dishwasher, Dryer, Electric Stove, Microwave Hood Fan, Refrigerator, Washer, Window Coverings
Heating	Baseboard
Cooling	None
Fireplace	Yes
# of Fireplaces	1
Fireplaces	Gas
# of Stories	25

Exterior

Exterior Features	Private Entrance
Roof	Tar/Gravel
Construction	Brick, Concrete, Stucco
Foundation	Poured Concrete

Additional Information

Date Listed	July 10th, 2025
Days on Market	13
Zoning	DC (pre 1P2007)

Listing Details

Data is supplied by Pillar 9â„¢ MLSÂ® System. Pillar 9â„¢ is the owner of the copyright in its MLSÂ® System. Data is deemed reliable but is not guaranteed accurate by Pillar 9â„¢. The trademarks MLSÂ®, Multiple Listing ServiceÂ® and the associated logos are owned by The Canadian Real Estate Association (CREA) and identify the quality of services provided by real estate professionals who are members of CREA. Used under license.