

\$799,900 - Township Rd 215, Rural Wheatland County

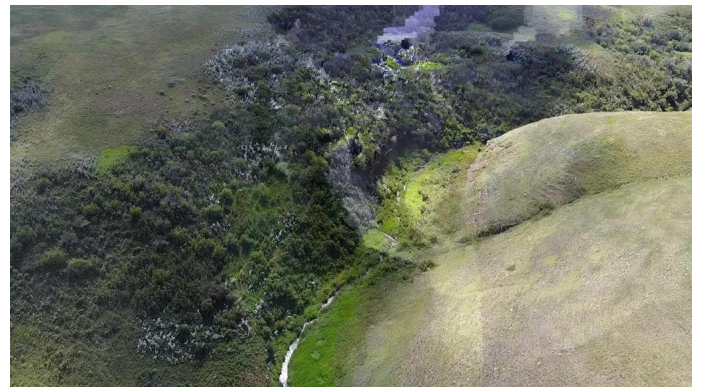
MLS® #A2244795

\$799,900

0 Bedroom, 0.00 Bathroom,
Land on 58.96 Acres

NONE, Rural Wheatland County, Alberta

Endless possibilities await with this 58.96-acre parcel in Wheatland County! Featuring gently rolling terrain, gorgeous valley views, scenic coulees & wide-open spaces, this versatile property is perfect for building your dream acreage, starting a hobby farm, or creating a private recreational retreat. Ideally located just minutes from Carseland & a short drive to Strathmore or Calgary, it offers the perfect balance of rural tranquility & convenient access to nearby amenities. Future subdivision potential (subject to county approvals) makes this a fantastic investment. Approximately 40 acres consist of native unbroken prairie wool that is currently hayed, providing a unique opportunity to maintain the natural ecosystem while producing quality forage. Don't miss this rare opportunity to own nearly 60 acres in a prime location – book your showing today!



Essential Information

MLS® #	A2244795
Price	\$799,900
Bathrooms	0.00
Acres	58.96
Type	Land
Sub-Type	Residential Land
Status	Active

Community Information

Address	Township Rd 215
---------	-----------------

Subdivision	NONE
City	Rural Wheatland County
County	Wheatland County
Province	Alberta
Postal Code	T0J 0M0

Exterior

Lot Description	See Remarks
-----------------	-------------

Additional Information

Date Listed	August 3rd, 2025
Days on Market	19
Zoning	T0J 0M0

Listing Details

Listing Office	MaxWell Capital Realty
----------------	------------------------

Data is supplied by Pillar 9â„¢ MLSÂ® System. Pillar 9â„¢ is the owner of the copyright in its MLSÂ® System. Data is deemed reliable but is not guaranteed accurate by Pillar 9â„¢. The trademarks MLSÂ®, Multiple Listing ServiceÂ® and the associated logos are owned by The Canadian Real Estate Association (CREA) and identify the quality of services provided by real estate professionals who are members of CREA. Used under license.